

PLANT LIST			
32 SENECA DRIVE			
** DENOTES NATIVE			
QTY	BOTANICAL NAME	COMMON NAME	SPECIFICATION
TREES			
2	<i>Simarouba glauca</i>	Paradise Tree	B&B, 12' c.t. ht., Matched Hts. - Certified Lethal Bronzing
2	<i>Phoenix sylvester</i>	Sylvester Date Palm	B&B, 12' on ht. Std.
1	<i>Conocarpus erectus</i> **	Green Buttonwood	B&B, 12' on ht. Std.
1	<i>Tibouchina granulosa</i>	Purple Glory Tree	25g., 5-8' ht. Std.
2	<i>Quercus virginiana</i> **	Live Oak - Swale Tree	B&B 14' ht. x 6' spr., 3" Cal.
1	<i>Coccothrinax crinita</i>	Old Man Palm	25g., 4-5' on ht., Specimen
3	<i>Cocos nucifera</i> 'Green Malaysian'	Green Malaysian Coconut	B&B, 3 @ 6' CT Hts.
3	<i>Dypsis cabadae</i>	Cabada Palm	B&B, 12-14' on ht., Multi-trunk
7	<i>Sabal palmetto</i> **	Sabal Palm	B&B, 14' ct ht., Curved trunk character - Mitigation 100sf/palm
11	<i>Calophyllum brasiliense</i>	Brazil Beautyleaf	B&B, 10' ht. x 5' spr., Matched Std. - Mitigation @ 200 sf/tree
2	<i>Clusia rosea</i>	Pitch Apple	B&B, 12-14' on ht., Matched Full
SHRUBS & GROUNDCOVERS			
4	<i>Monstera deliciosa</i>	Swiss Cheese Vine	7g., spaced as shown
170	<i>Clusia guttifera</i>	Small Leaf Clusia	7g., 30" ht x 24", 30" o.c.
36	<i>Philodendron 'Rojo Congo'</i>	Rojo Congo	7g., spaced as shown
222	<i>Microsorium scolopendria</i>	Wart Fern	1g., 18" o.c.
10	<i>Alcantarea Imperialis Red</i>	Imperialis Red	14" Pot - Spaced as shown
2	<i>Allamanda 'Cherries Jubilee'</i>	Cherries Jubilee	7g., Trellis
43	<i>Podocarpus macrophyllus 'Maki'</i>	Japanese Yew Maki	3g., 24" o.c.
45	<i>Ficus macrocarpa</i>	Green Island Ficus	3g., 24" o.c.
80	<i>Philodendron 'Burlie Marx'</i>	Burlie Marx	3g., 24" o.c.
1	<i>Cestrum nocturnum</i>	Night Blooming Jasmine	7g., 36" ht.
2	<i>Rhapis excelsa</i>	Lady Palm	15g., 4-5' ht., Full to base bush
4	<i>Agave attenuata</i>	Soft Tip Agave	7g., spaced as shown in planter
40	<i>Tripsacum floridanum</i> **	Dwarf Fakahatchee Grass	3g., 36" o.c.
1,560 SF	Zoysia Lawn	Empire Zoysia	Weed Free Staggered Panels
820 SF	Zoysia Lawn - SWALE	Empire Zoysia	Weed Free Staggered Panels

13 Trees - 8 Native/Drought Tolerant = 62% Native/Drought Tolerant
 888 Shrubs/Groundcovers - Native/Drought Tolerant = 54% Native/Drought Tolerant

ROOT BARRIER

UB 18-2 TECH SHEET

This 18" high by 24" wide barrier is for linear, surround, and root pruning applications. It is suitable for use on sidewalks, paths, and patios, as well as other tree planting situations.

UB 18-2 SPECIFICATIONS + FEATURES

USES: Redirect tree roots down and away from hardscapes.

MATERIALS: High quality 75% recycled injection molded co-polymer polypropylene. Manufactured in ISO 9001:2008 registered factories. Added UV inhibitors prevent breakdown from sun exposure.

SIZES & PACKAGING: Each panel is 18" (46 cm) x 24" (61 cm). 26 Panels (52 linear feet / 16 m) per carton, 20 cartons per pallet, approximately 43 lbs. (19.5 kg) per carton.

FEATURES: 90° ribs redirect root growth down and away from hardscapes. Instant assembly; panels slide together with a zipper joining system. Patented double top edge for strength, safety, appearance and root overgrowth protection. Added UV inhibitors prevent breakdown from sun exposure. Rounded edges for safety in handling. Made in the USA.

APPLICATIONS:

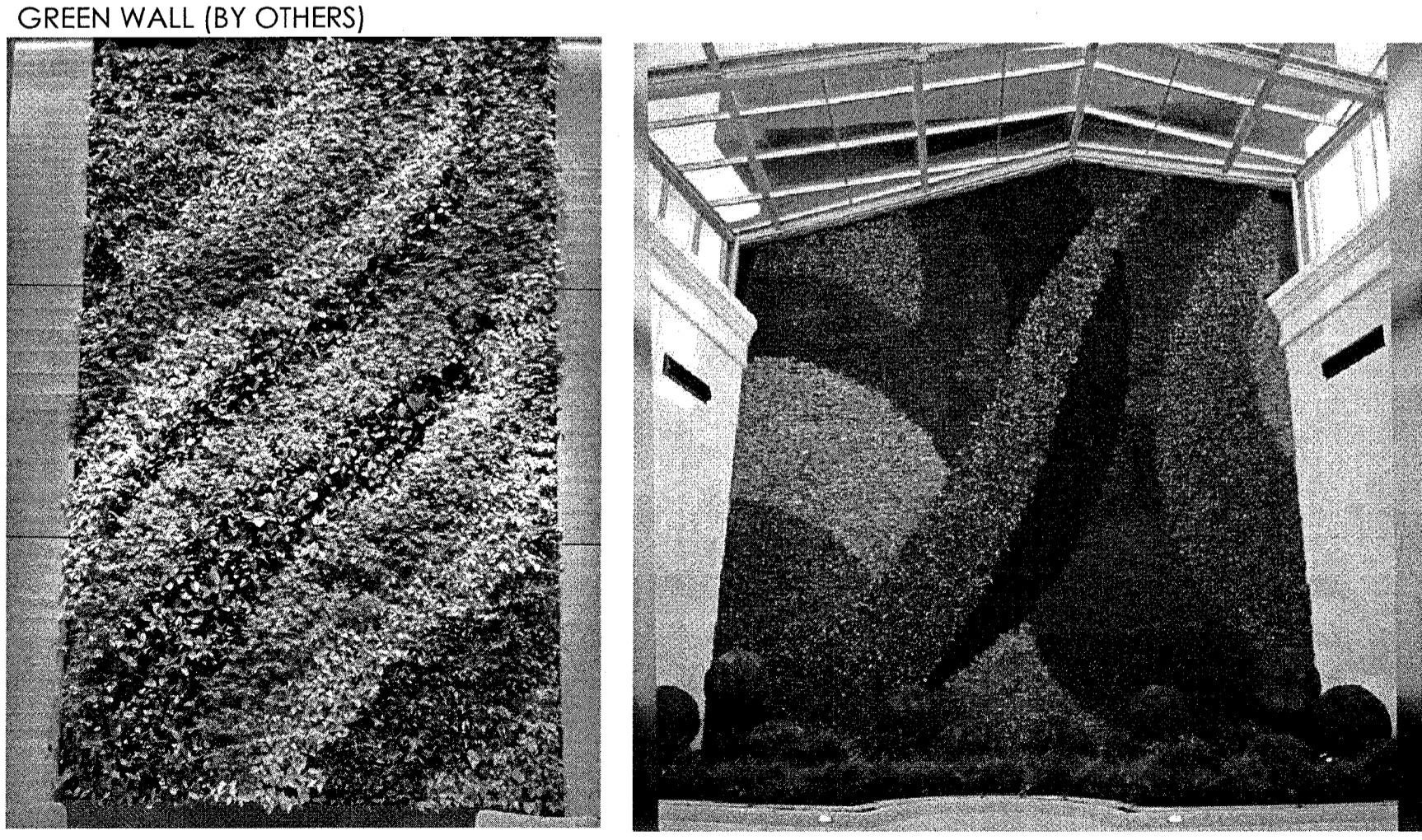
- LINEAR:** Provide maximum hardscape protection while utilizing all available rooting space for improved tree health by placing guides in a straight line directly along the hardscape to be protected.
- SURROUND:** Protect hardscapes that surround a planting on all four sides. Plan to line the perimeter of the planting area with the panels—this provides the maximum available uncompacted soil volume for immediate root growth.
- ROOT PRUNING:** Root pruning can help save existing trees and prevent future damage to paving. Disruptive roots are cleanly cut and removed; linear Root Barrier is then installed. There are limitations to root pruning and an ISA Certified Arborist should be consulted.

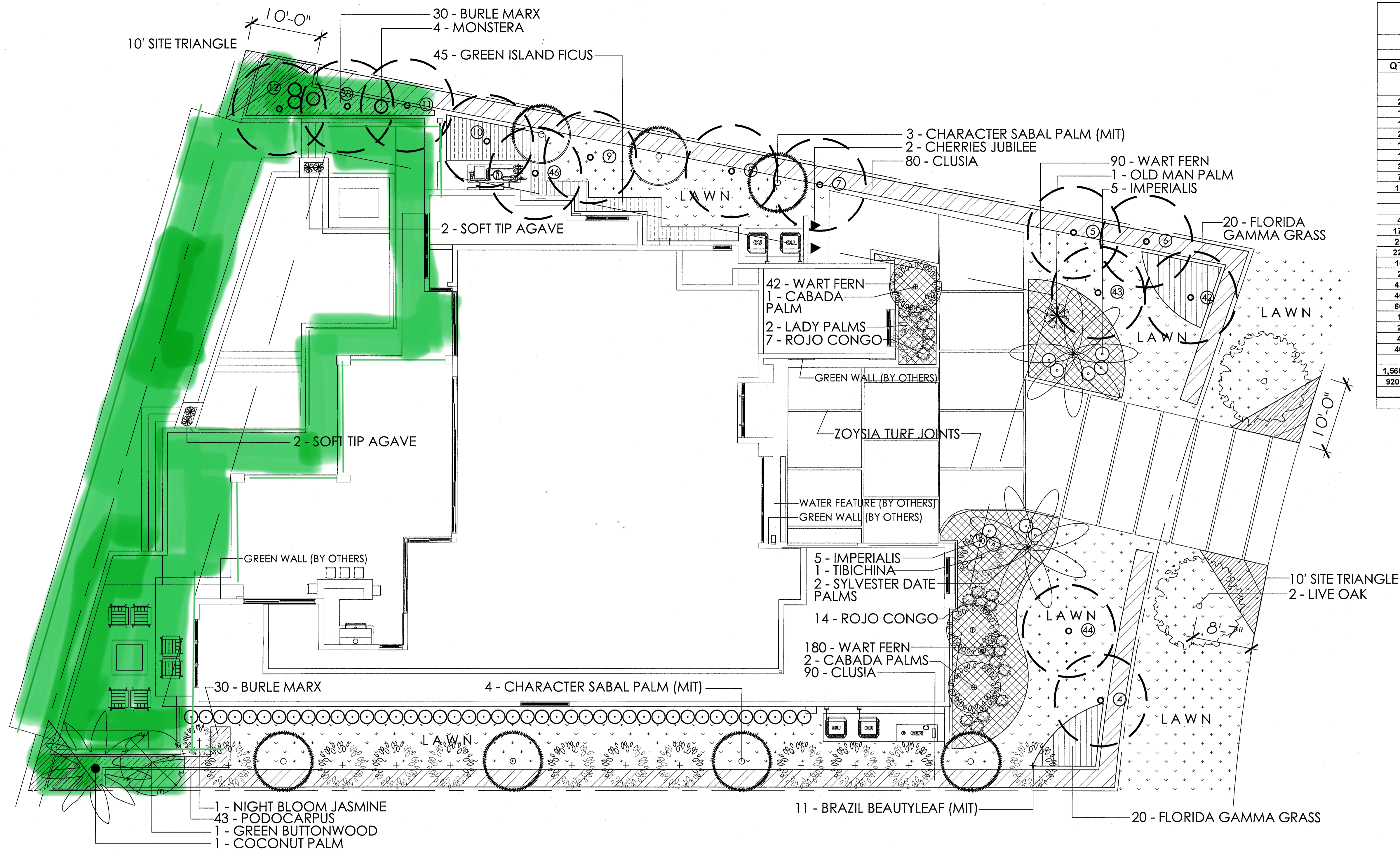
HOW TO SPECIFY:

- Determine linear, surround, root pruning or specialty application.
- Pick appropriate barrier depth for application and site.
- Calculate number of panels required.
- For details on these or any other installation instructions, please refer to our Specification and Installation Manual, or visit www.deepproot.com.

ZIPPER JOINING SYSTEM: Each panel has a built-in zipper joiner along one edge, making assembly of the panels in the field quick and easy.

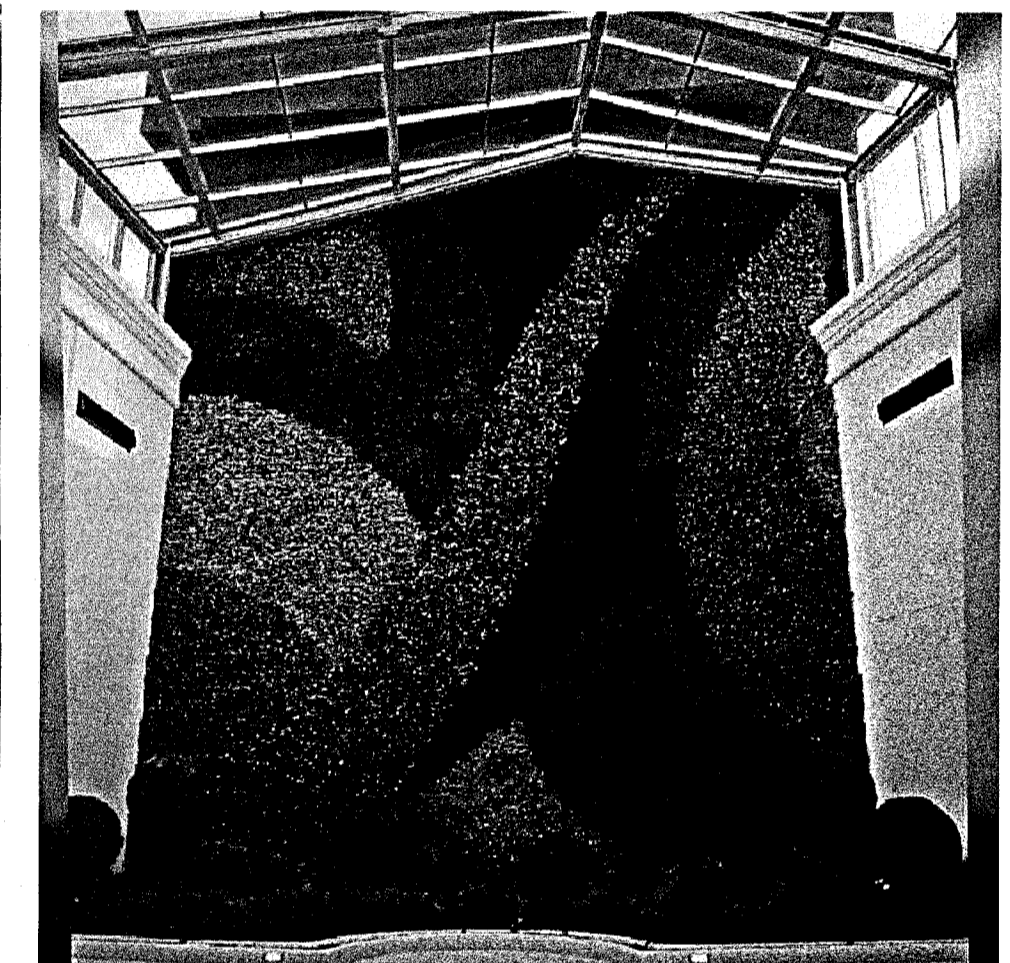
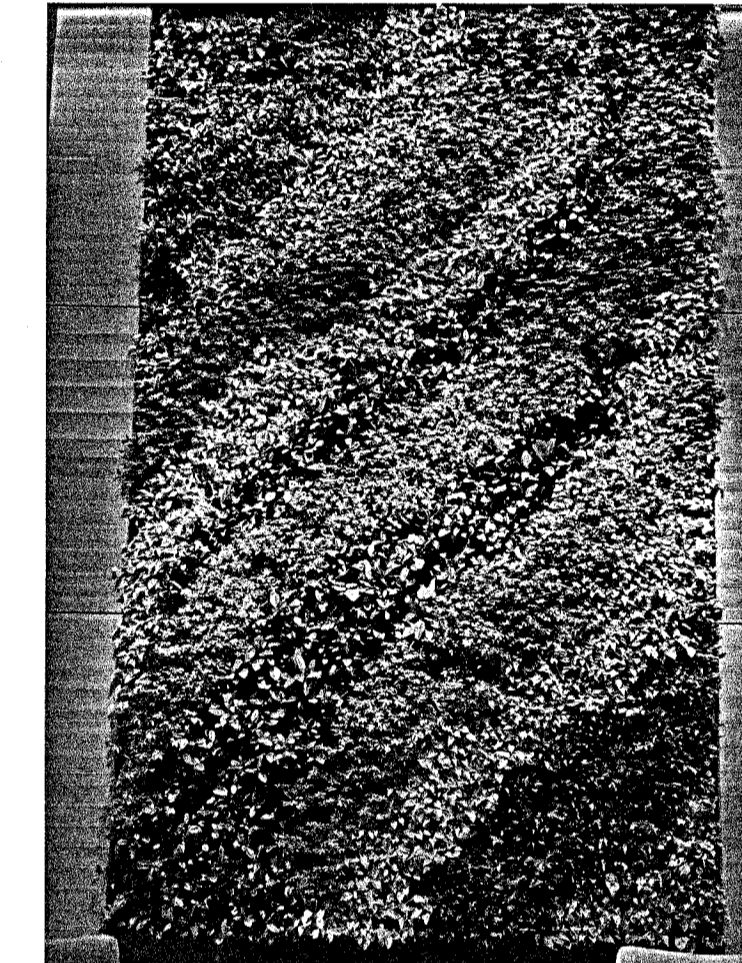
DOUBLE TOP EDGE: Patented double top edge adds strength, safety, and root overgrowth protection.



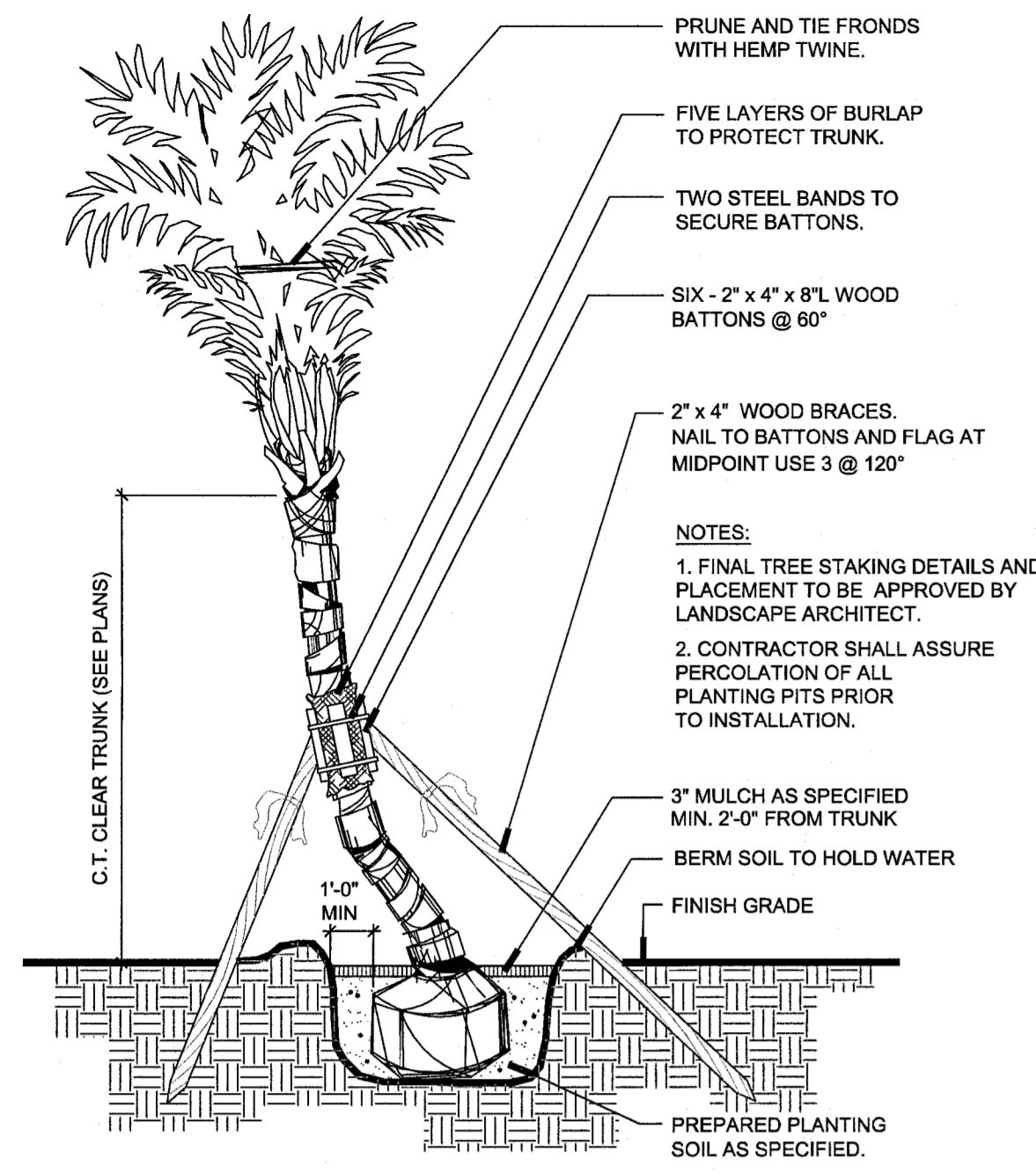


PLANT LIST			
32 SENECA DRIVE		** DENOTES NATIVE	
QTY	BOTANICAL NAME	COMMON NAME	SPECIFICATION
TREES			
2	Phoenix sylvester	Sylvester Date Palm	B&B, 12' c.t. ht., Matched Hts. - Certified Lethal Bronzing
1	Conocarpus erectus **	Green Buttonwood	B&B, 12' oa ht., Std.
1	Tibouchina granulosa	Purple Glory Tree	25g., 5-6' ht Std.
2	Quercus virginiana **	Live Oak - Swale Tree	B&B 14' ht. x 6' spr., 3" Cal.
1	Coccothrinax crinita	Old Man Palm	25g., 4-5' oa ht., Specimen
1	Cocos nucifera 'Green Malayan'	Green Malayan Coconut	B&B, 3 @ 6' CT Hts.
3	Dypsis cabadae	Cabada Palm	B&B, 12-14' oa ht., Multi-trunk
7	Sabal palmetto **	Sabal Palm	B&B, 14' ct ht., Curved trunk character - Mitigation 100sf/palm
11	Calophyllum brasiliense	Brazil Beautyleaf	B&B, 10' ht. x 5' spr., Matched Std. - Mitigation 200sf/tree
SHRUBS & GROUNDCOVERS			
4	Monstera deliciosa	Swiss Cheese Vine	7g., spaced as shown
170	Clusia guttifera	Small Leaf Clusia	7g., 30" ht x 24", 30" o.c.
21	Philodendron 'Rojo Congo'	Rojo Congo	7g., spaced as shown
222	Microsorium scolopendria	Wart Fern	1g., 18" o.c.
10	Alcantarea Imperialis Red	Imperialis Red	14" Pot - Spaced as shown
2	Allamanda 'Cherries Jubilee'	Cherries Jubilee	7g., Trellis
43	Podocarpus macrophyllus 'Maki'	Japanese Yew Maki	3g., 24" o.c.
45	Ficus macrocarpa	Green Island Ficus	3g., 24" o.c.
60	Philodendron 'Burle Marx'	Burle Marx	3g., 24" o.c.
1	Cestrum nocturnum	Night Blooming Jasmine	7g., 36" ht
2	Rhapis excelsa	Lady Palm	15g., 4-5' ht., Full to base bush
4	Agave attenuata	Soft Tip Agave	7g., spaced as shown in planter
40	Tripsacum floridanum **	Dwarf Fakahatchee Grass	3g., 36" o.c.
1,560 SF	Zoysia Lawn	Empire Zoysia	Weed Free Staggered Panels
920 SF	Zoysia Lawn - SWALE	Empire Zoysia	Weed Free Staggered Panels

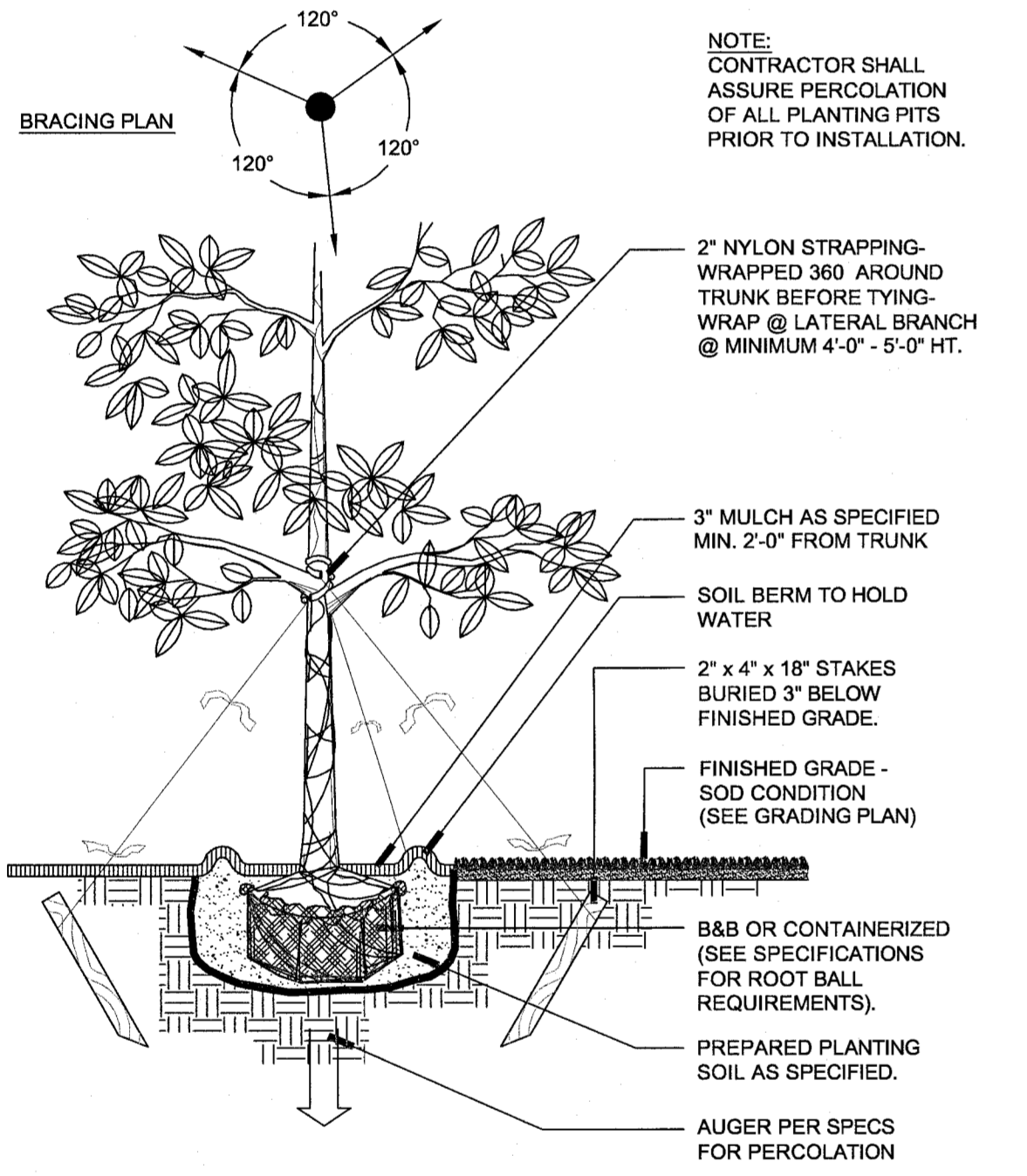
GREEN WALL (BY OTHERS)



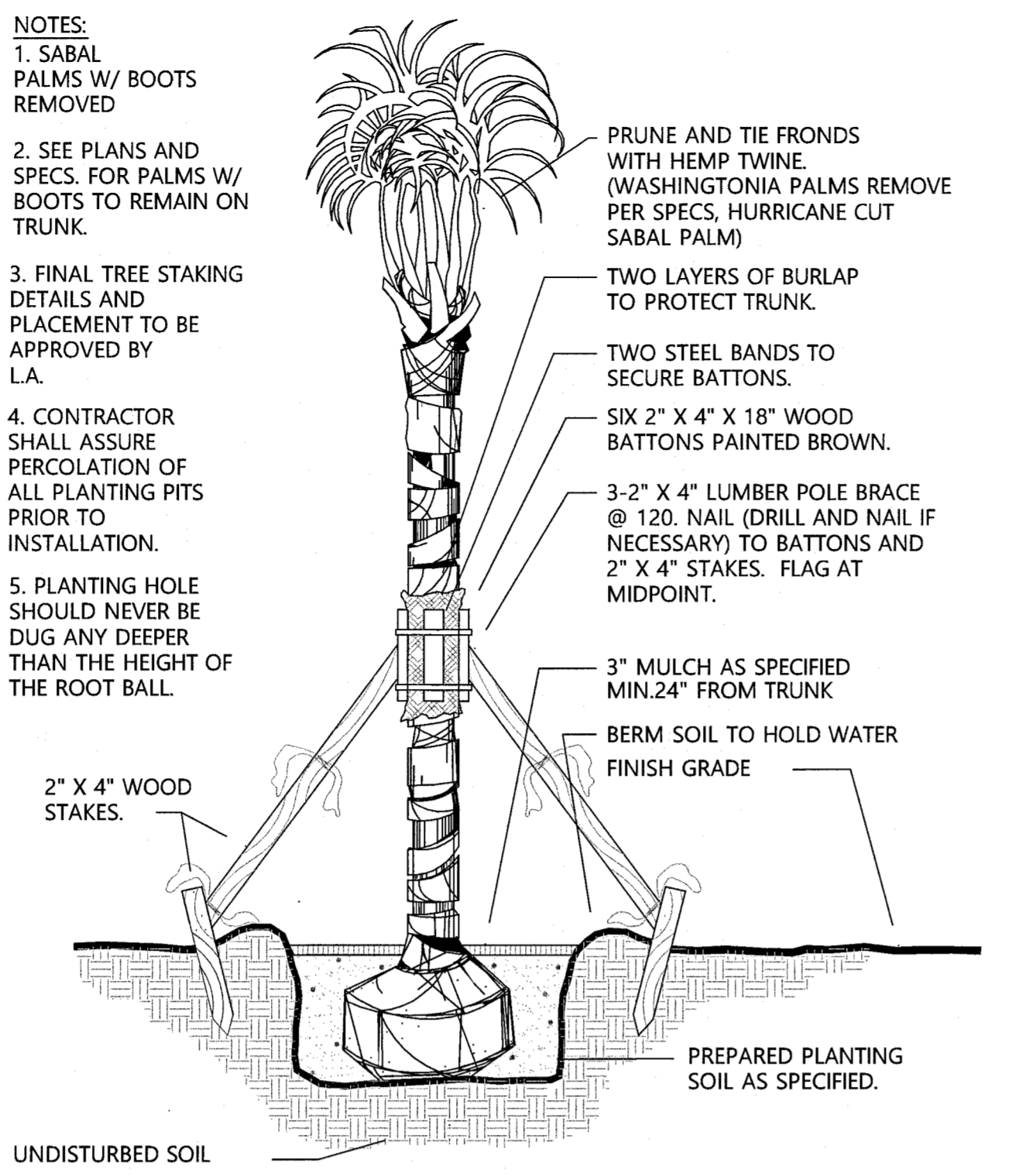
NOT USED



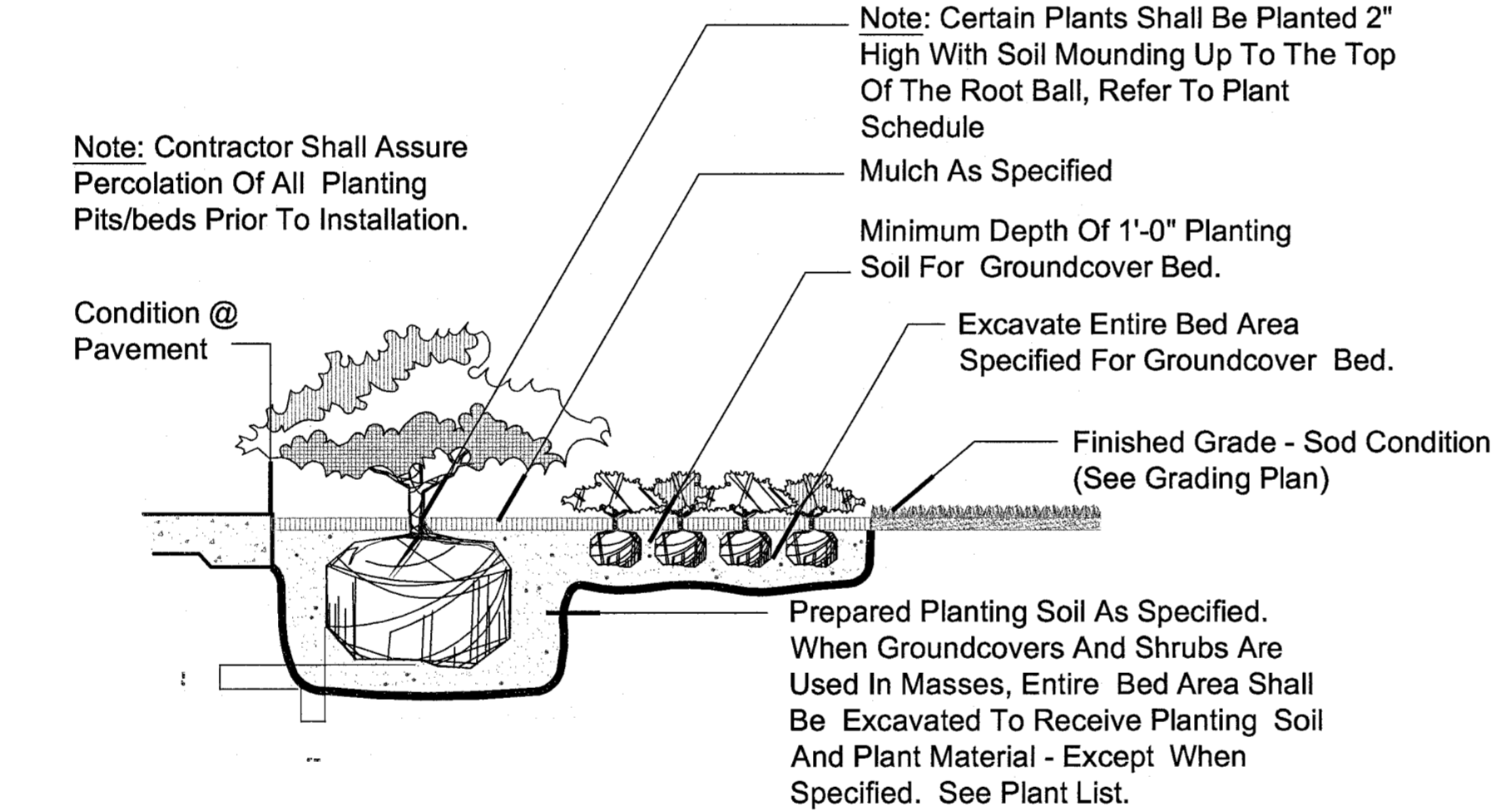
1 COCONUT PALM
SECTION
ICNXDET.DWG
NOT TO SCALE



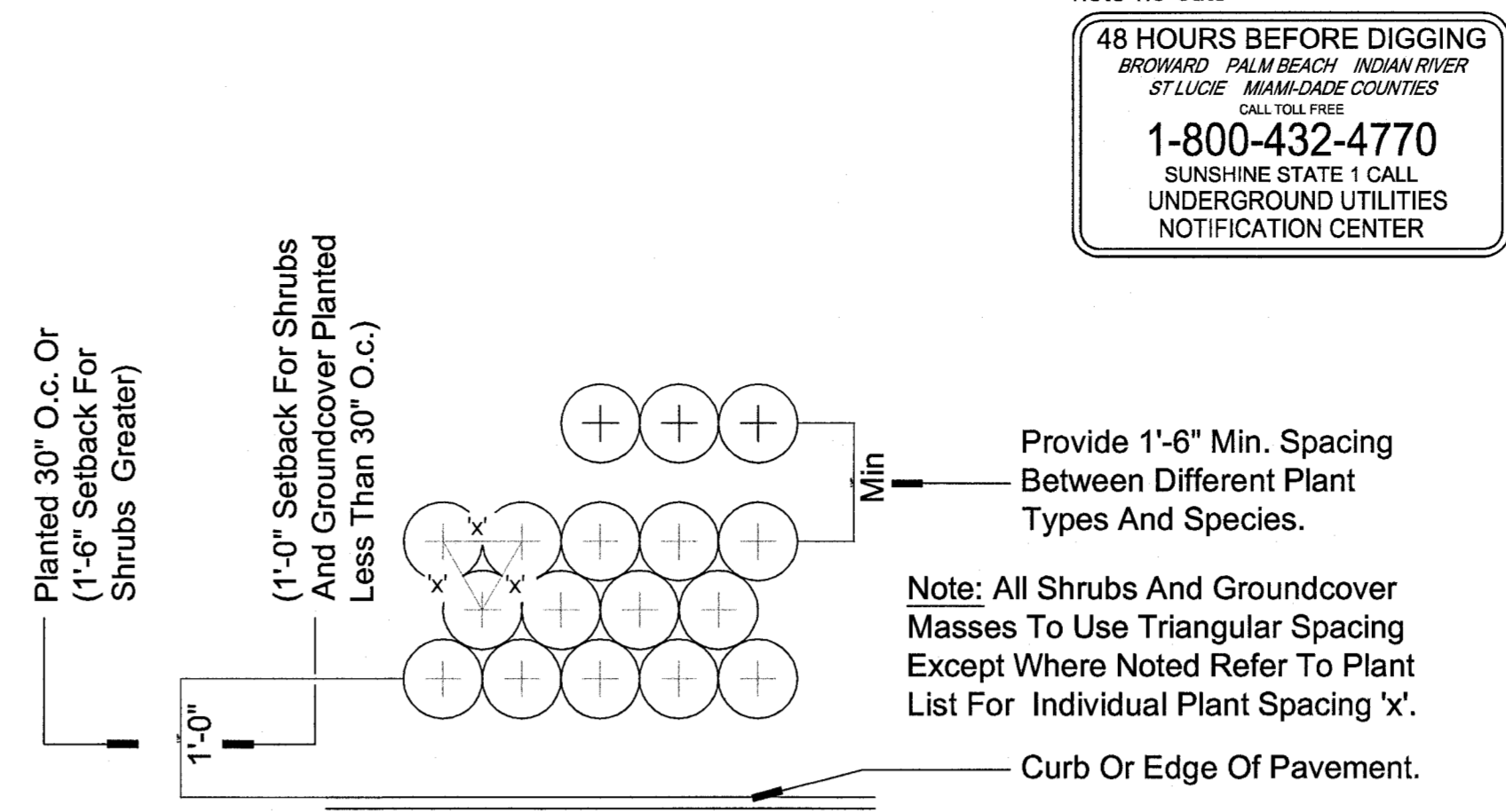
4 LARGE TREE
SECTION
ILTRDET.DWG
NOT TO SCALE



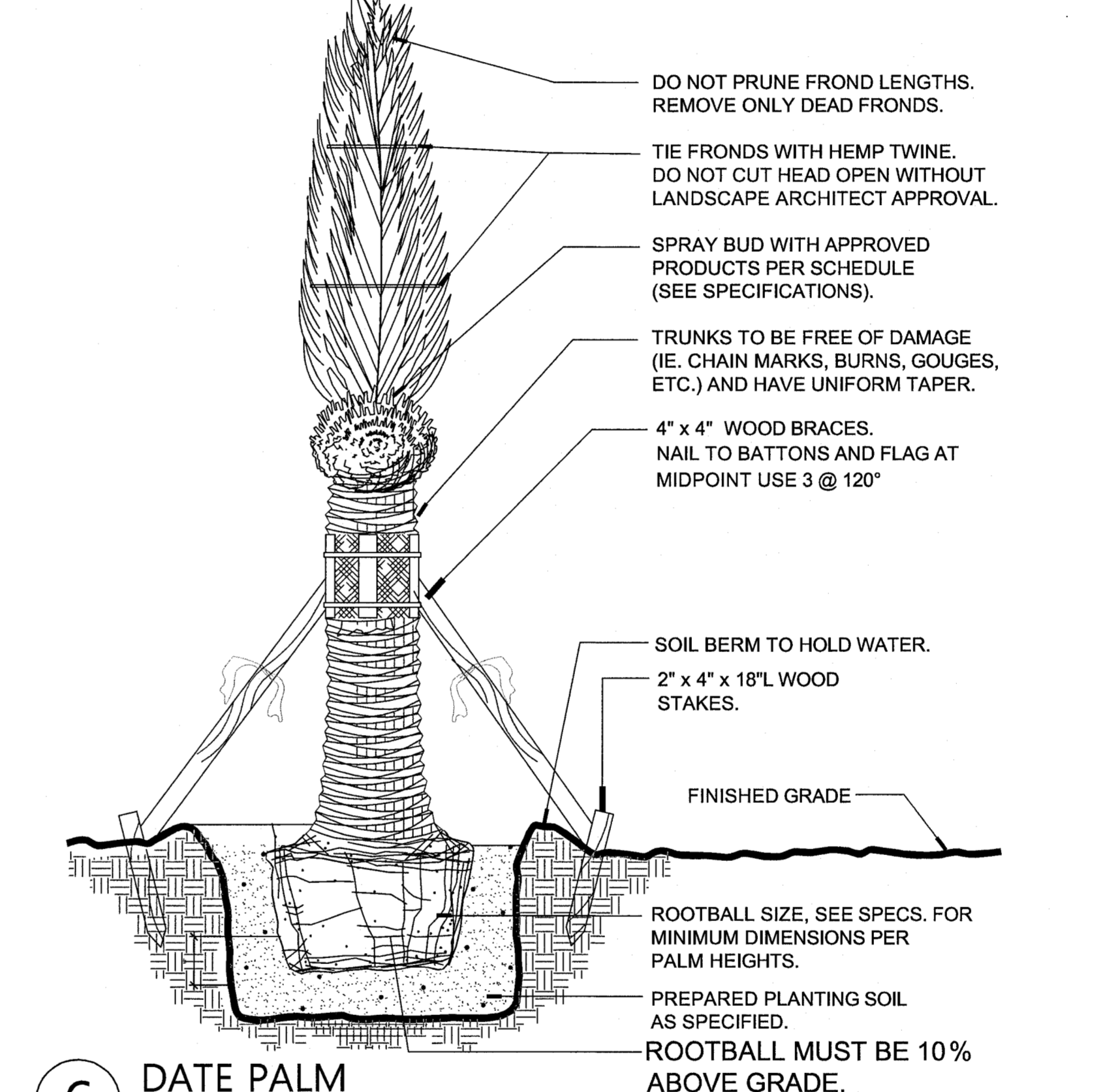
2 SABAL PALM
SECTION
NOT TO SCALE



5 Shrub And Groundcover Detail
Section
Not To Scale



3 Typical Plant Spacing Detail
Plan
Not To Scale



6 DATE PALM
SECTION
SCALE: N.T.S.

ALL PLANTING DETAILS MUST PROVIDE NOTE FOR EXCAVATION PIT TO BE MINIMUM 2X ROOTBALL. BACKFILL WITH CLEAN 50% SAND / 50% MUCK MIX.

SOIL PREPARATION AND SOIL MIX

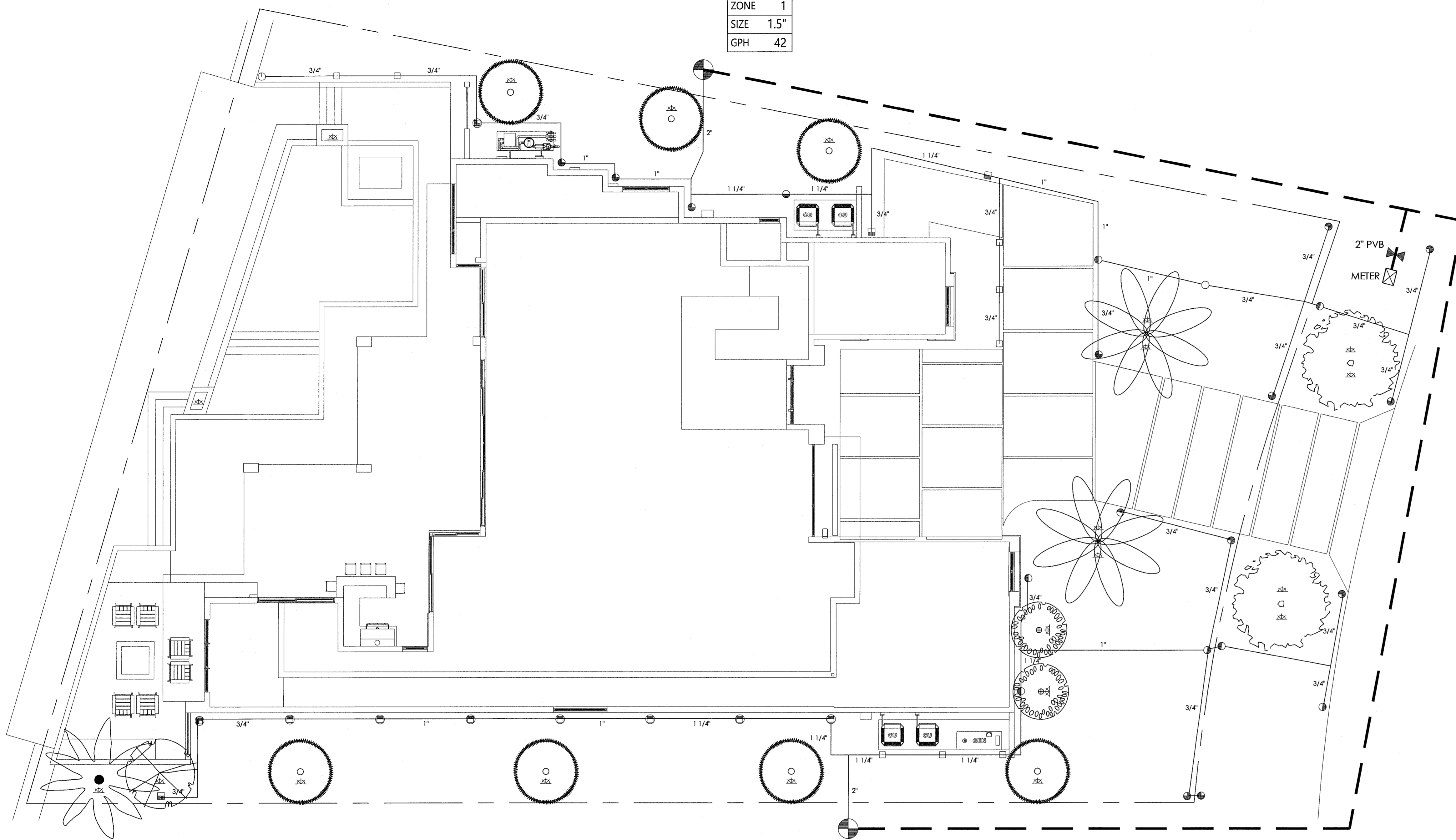
- Apply Roundup (manufactured by Monsanto Corp.) according to manufacturer's rate and specification within limits of all areas to be planted. Protect existing plants to remain from overspray or spray within root zone. Contractor to ensure total weed eradication.
- Before replacing topsoil, rake subsoil surface clear of stones (1" diameter and larger), debris, rubbish, and remaining roots from removed plant material.
- Scarify subsoil to a depth of three inches(3").
- Contractor to apply "Surflan" or approved pre-emergent herbicide in accordance with manufacturer's rate and specifications.
- Landscape Contractor shall be responsible for confirming all planting soil types and specifications with Landscape Architect prior to bid. Contractor to submit laboratory soil tests of the soil mixture for approval by Landscape Architect.
- Florida peat shall be free of deleterious materials that would be harmful to plant growth, shall be free of nematodes, shall be of uniform quality and shall have a pH value between 5.3 and 6.5 (as determined in accordance with ASTM E70). Florida peat shall be sterilized to make free of all viable nut grass and other undesirable weeds.
- Topsoil shall be natural, fertile, agricultural soil capable of sustaining vigorous plant growth. It shall be of uniform composition throughout, with admixture of subsoil. It shall be free of stones, lumps, live plants an their roots, sticks, and other extraneous matter. Spread topsoil mixture to minimum depth of 2" through-out all sod areas and 12" in all shrub and groundcover beds. Remove all rocks and other objects over 1" in diameter.
- Smooth all soil mixture to four inches(4") below top of surrounding pavement edges.
- Smooth topsoil mixture to two inches(2") below finish grade in areas to be sodded.
- Topsoil shall not be extremely acid or alkaline, nor contain toxic substances which may be harmful to plant growth. The topsoil pH shall be in the range of pH 5.5 to 6.5. If necessary, the Contractor shall apply the appropriate soil amendments adjusting soil pH to assure a pH range of 5.5 to 6.5.
- Finish grade all topsoil areas to a smooth, even surface, assuring positive drainage away from the structures and eliminate any low areas which may collect water.
- Contractor to remove debris and excess material immediately from job site.
- Minimum topsoil (approved plant mix) for shrubs and groundcover is 12" depth.
- The contractor shall bear all costs of testing of soils, amendments, etc. associated with the work and the specifications. Prior to commencement of the landscape planting work the Contractor shall provide complete soil tests to be submitted to the Landscape Architect for approval.

note-no-cuts
48 HOURS BEFORE DIGGING
BROWARD PALM BEACH ADRIAN RIVER
ST. LUCE MANATEE COUNTIES
CALL TOLL FREE
1-800-432-4770
SUNSHINE STATE 1 CALL
UNDERGROUND UTILITIES
NOTIFICATION CENTER

LANDSCAPE PLANTING NOTES

- Contractor shall field verify all information prior to initiating planting installation. All existing planting shall remain intact and undisturbed unless otherwise noted on the plans.
- Prior to construction, the Contractor is responsible for locating all underground utilities and shall avoid damage to all utilities during construction. Should the Contractor cause damage to any utilities, he/she shall make necessary repairs as quickly as practicable.
- The Contractor is responsible for maintaining in full all planting areas (including watering, spraying, mulching, mowing, fertilizing, etc.) until the job is accepted, in full, by the Owner and Landscape Architect.
- All plants must be healthy, vigorous material, free of pests and Disease. All plant material shall be in full and strict accordance to Florida No. 1 grade, according to the "Grades and Standards for Nursery Plants", published by the Florida Department of Agriculture and Consumer Services. Plant materials shall in some instances exceed No. 1 grade in order to meet the minimum requirements of this project.
- Contractor shall be responsible for plants meeting specification as noted prior to installation. Contractor shall immediately remove all plant material that does not conform to specifications.
- All container sizes noted on plant list are minimum. Increase size if necessary to conform to plant size and specifications.
- All rootballs shall conform to the size standards set forth in "American Standards for Nursery Stock".
- Contractor to submit to the Landscape Architect the Grower's and/or state inspection certificate for plant material one week before commencement of work.
- Landscape Contractor shall field stake the location of all plant material prior to initiating installation for the review and approval of the Landscape Architect.
- Any substitutions in size and/or plant material must be approved by the Landscape Architect. All plants will be subject to approval by Landscape Architect and/or Owner's Representative before planting can begin.
- Contractor shall refer to the landscape planting details, plant list, general notes and the specifications for complete landscape planting instructions.
- Guying / staking practices shall not permit nails, screws, wires etc., to penetrate outer surface of tree or palm. Trees or palms rejected due to this practice shall be replaced with inspector on site.
- Burlap material, wire cages, plastic straps, etc., must be cut and removed from top one - half (1/2) of root ball.
- Trees grown in grow bags or grow bag type material must have the grow bag REMOVED ENTIRELY prior to planting.
- All plant material shall be protected during transport and delivery to job site with shade cloth or other acceptable means of windburn prevention.
- All trees must be straight trunked, full headed, and meet all requirements specified.
- All trees must be guyed or staked as shown in the details.
- All plant material shall be installed in a sound, workman-like manner and according to accepted good planting procedures with the quality of plant materials as hereinafter described. All elements of landscaping shall be installed so as to meet all applicable ordinances and code requirements.
- Contractor shall mulch all plant material throughout and completely to a 3" depth with clean, weed free Eucalyptus mulch.
- Contractor shall assure drainage and percolation of all planting pits prior to installation of plant material. Contractor shall fill all tree pits with water before planting to assure that proper drainage and percolation is available. Correct if required to assure percolation. Contractor is responsible for replacement of all plants lost due to inadequate drain- age conditions.
- Contractor to guarantee plant material for a period of 12 months after date of substantial completion. The guarantee begins over for plants replaced during the original guarantee.
- Contractor to request inspection of project in writing. If all work is satisfactory and complete in accordance with conditions of contract documents, then the Owner and Landscape Architect shall declare the project Substantially complete constitutes the beginning of guarantee period.
- Contractor to replace rejected plant material within two(2) weeks of notice.
- Contractor shall remove all staking of trees after 12 months from time of installation.
- Typically, shrub and groundcover plantings are shown as mass planting beds. Plants shall be placed on a triangular spacing configuration (staggered spacing). Plant center to center dimensions (O.C.) are listed under "Specifications" on the plant list.
- Fertilization: All plantings shall be properly fertilized at installation with at least a minimum of 25% organic 6-6-6, time release, with trace elements or better.
- Landscape shall be maintained in a good condition so as to present a healthy, neat and orderly appearance at least equal to the original installation and shall be mowed or trimmed in a manner and at a frequency so as not to detract from the appearance of the general area.
- Irrigation system shall be automatic with water from municipal or reclaimed source. System shall deliver 150% coverage with 50% overlap, and shall be equipped with an automatic rain shut-off switch, unless otherwise instructed.

ZONE 1
 SIZE 1.5"
 GPH 42



ZONE 2
 SIZE 1.5"
 GPH 46

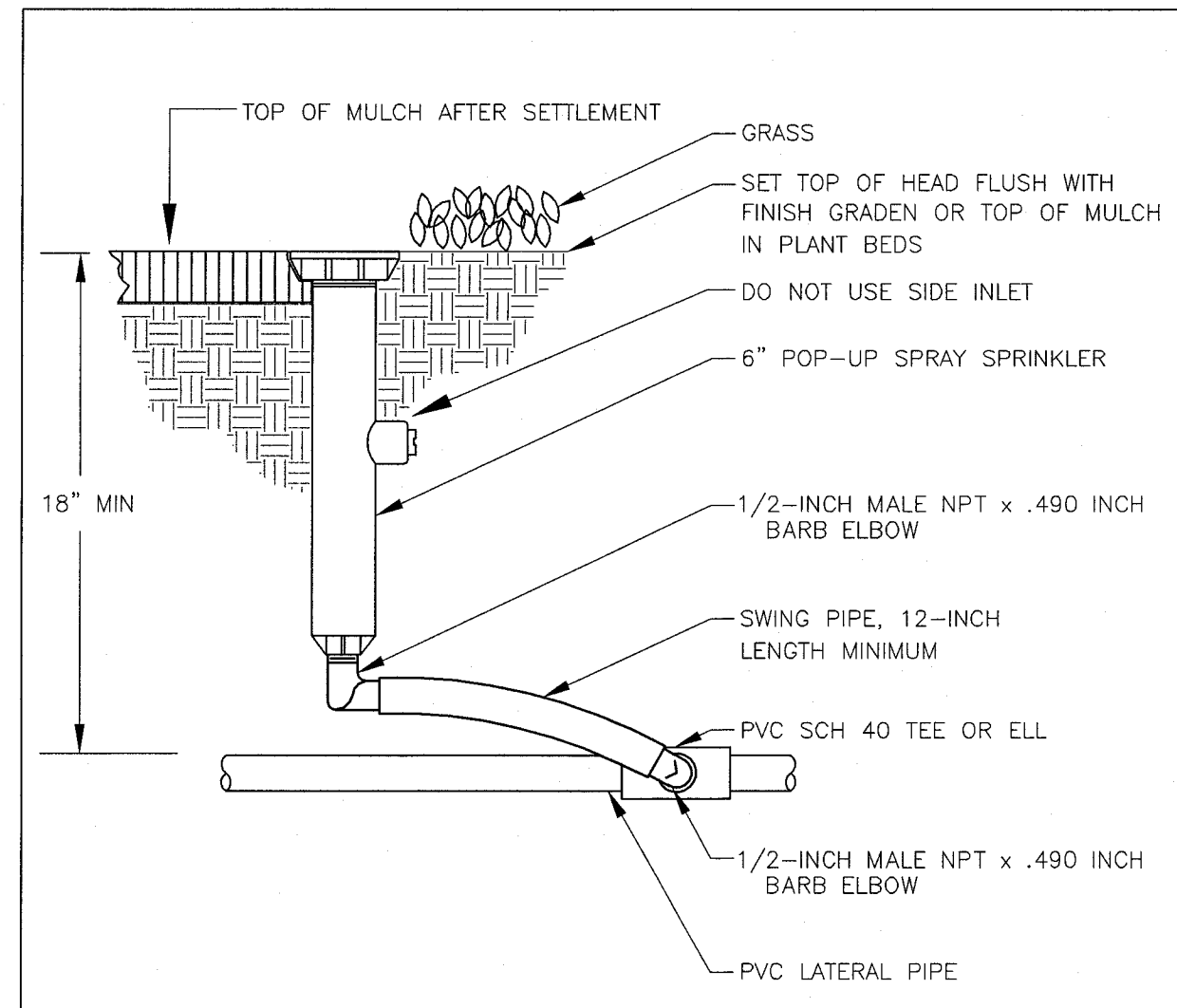
IRRIGATION NOTES

1. THE CONTRACTOR SHALL BE RESPONSIBLE FOR CONTACTING LOCAL UNDERGROUND UTILITIES TO VERIFY LOCATIONS. THE CONTRACTOR SHOULD VISIT THE SITE PRIOR TO INSTALLATION AND BECOME FAMILIAR WITH EXISTING CONDITIONS.
2. THE CONTRACTOR IS RESPONSIBLE FOR ALL MATERIAL REQUIRED TO MAKE THE SYSTEM FUNCTION PROPERLY. ALL IRRIGATION SHALL BE INSTALLED IN ACCORDANCE WITH MANUFACTURER'S SPECIFICATIONS AND ALSO STATE AND/OR LOCAL CODES.
3. IRRIGATION PLANS ARE SCHEMATIC AND DRAWN FOR GRAPHIC CLARITY. ALL PIPING BELOW PAVEMENT SHALL BE SLEEVED. LAYOUT OF IRRIGATION SYSTEM SHALL BE COORDINATED WITH CORRESPONDING LANDSCAPE PLAN.
4. SPRINKLER LOCATIONS ADJACENT TO PAVEMENT, STRUCTURES, FENCES, ETC. SHALL BE OFFSET AS FOLLOWS: 12" MIN FOR POP-UP MIST HEADS, 18" FOR SHRUB RISERS, 18" FOR ROTOR HEADS, AND TYPICALLY 5 FEET FOR ROTORS ALONG UNCURBED ROADWAYS.
5. ALL HEADS ON RISERS SHALL BE SET AT THE HEIGHT OF ADJACENT PLANT MATERIAL.
6. PIPING IN NARROW PLANTING AREAS, PARKING ISLANDS AND PLANTERS SHALL BE SET TO ONE SIDE TO ALLOW ROOM FOR ROOT BALLS. PIPE AS INDICATED ON PLAN IS SCHEMATIC AND SHOULD BE ADJUSTED FOR FIELD CONDITIONS.
7. PIPING SHALL BE SIZED TO MINIMIZE FRICTION LOSS AND MAINTAIN FLOW VELOCITY BELOW 5 FPS.
8. ALL SLEEVING SHALL BE SCH 40 PVC TO SIZE INDICATED ON PLAN, OR IF NOT INDICATED, A MIN. OF 2 PIPE SIZES LARGER THAN SUPPLY LINE CONTAINED. ALL SLEEVES SHALL BE INSTALLED A MIN. OF 24" BELOW FINISH GRADE.
9. THE IRRIGATION CONTROLLER SHALL BE INSTALLED IN ACCORDANCE WITH LOCAL CODES AND MANUFACTURER'S RECOMMENDATIONS. PROPER GROUNDING EQUIPMENT AND SURGE PROTECTION SHALL BE PROVIDED. A RAIN SENSOR SHALL BE INSTALLED TO OVER-RIDE THE CONTROLLER.
10. CONTROL WIRES SHALL BE UL APPROVED PE IRRIGATION CONTROL WIRE. USE 14 GAGE CONTROL WIRE AND 12 GAGE GROUND WIRE. WIRE SHALL BE BUNDLED AND ATTACHED TO THE MAIN LINE IN TRENCH OR THROUGH WIRE SLEEVES AT PAVEMENT CROSSINGS 24" BELOW FIN. GRADE. ALL SPLICES SHALL BE MADE WITH WATERPROOF DIRECT-BURIAL SPLICE KITS AND CONTAINED IN VALVE BOXES. TWO EXTRA CONTROL WIRES SHALL BE INSTALLED TO THE FURTHEST VALVES IN EACH DIRECTION FROM THE CONTROLLER.
11. VALVE LOCATIONS ARE SCHEMATIC ONLY AND WILL BE ADJUSTED FOR SITE CONDITIONS. EACH VALVE SHALL BE INSTALLED IN A AMETEK OR CARSON VALVE BOX. THE FLOW ADJUSTMENT FEATURE WILL BE USED TO BALANCE PRESSURE THROUGHOUT THE SYSTEM.
12. WATERING TIME PER STATION WILL BE DETERMINED IN THE FIELD AND PER LOCAL REQUIREMENTS. REFER TO MANUFACTURER'S INSTRUCTIONS FOR PRECIPITATION RATES OF SPRINKLERS SPECIFIED.
13. SYSTEM PIPE SIZE 3/4" SHALL BE CLASS 200 PVC; SYSTEM PIPE SIZE 1" OR GREATER SHALL BE CLASS 160 PVC. SYSTEM MAIN WILL BE SCH. 40 PVC TO SIZE INDICATED ON PLAN. ALL FITTINGS WILL BE SOLVENT WELD SCH 40 PVC. MAIN LINE SHALL HAVE 24" MINIMUM COVER; ALL OTHER PIPING WILL HAVE 12" MIN. COVER. ALL BACKFILL FOR PIPE TRENCHES SHALL BE CLEAN AND FREE OF FOREIGN DEBRIS AND SHARP OBJECTS; BACKFILLED TRENCHES SHALL BE PROPERLY COMPACTED. ALL MAIN LINES WILL BE INSTALLED A MIN. OF 3' FROM ANY TREE OR PALM.
14. ALL GLUE JOINTS SHALL BE CLEANED, SANDED, AND TREATED WITH A COLORED HIGH ETCH PRIMER AND JOINED USING A SOLVENT CONFORMING WITH ASTM D2564.
15. AS-BUILT DRAWINGS SHALL BE PREPARED BY THE CONTRACTOR AND GIVEN TO THE OWNER PRIOR TO FINAL ACCEPTANCE.

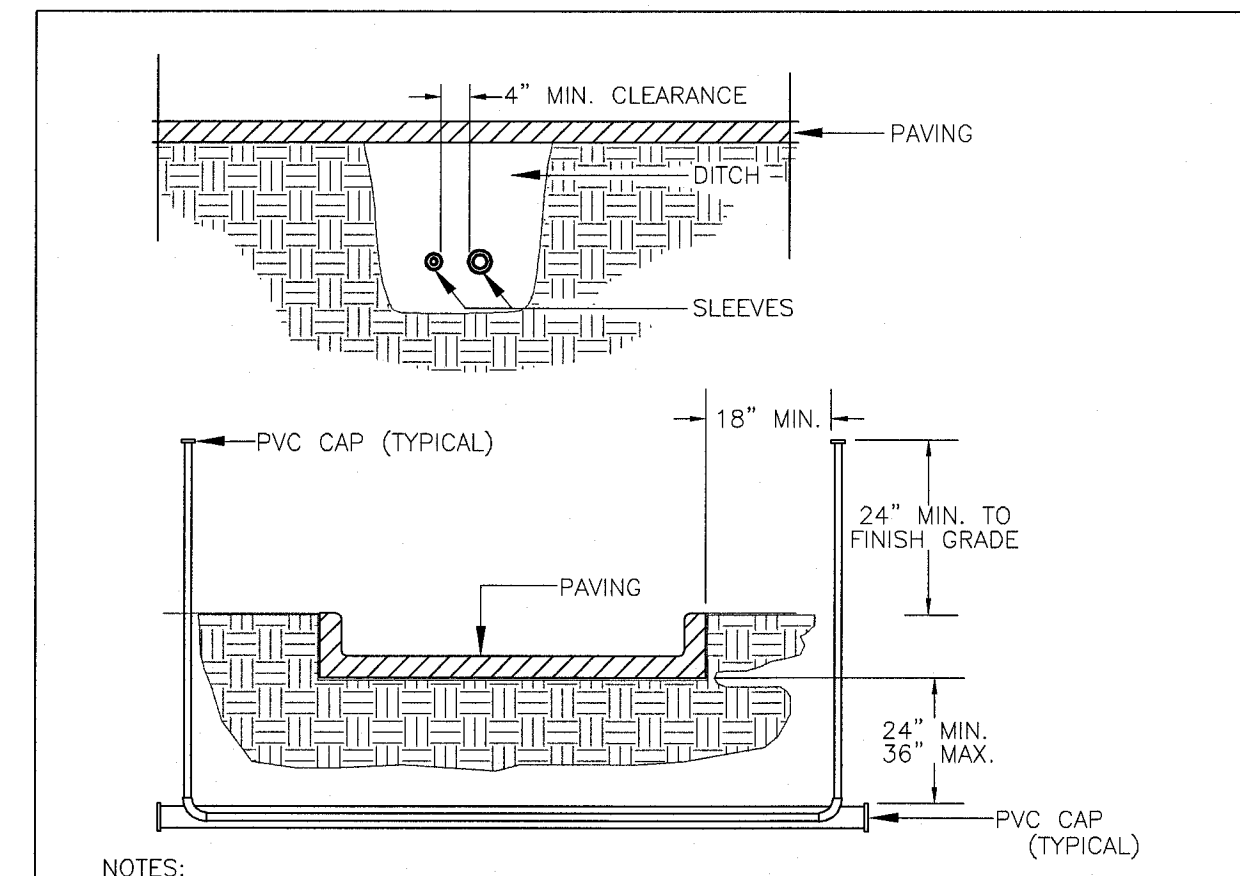
IRRIGATION LEGEND

FULL	THREE-QTR.	HALF	QUARTER	MIST HEADS
○	◐	◑	◒	RAINBIRD 1806 6" POP-UP MIST HEAD WITH THE FOLLOWING NOZZLES:
○	○	○	○	15' SERIES NOZZLE.
○	○	○	○	12' SERIES NOZZLE.
⊕	⊕	⊕	⊕	10' SERIES NOZZLE.
⊞	⊞	⊞	⊞	8' SERIES NOZZLE.
			□	15SST
			⊗	FLOOD BUBBLER
			⊙	IRRIGATION EQUIPMENT
			⊙	RAINBIRD PEB SERIES ELECTRIC GLOBE VALVE, SIZE AS NOTED ON PLAN, IN AMETEK OR CARSON 12"x18" VALVE BOX
			⊗	2" DOUBLE CHECK VALVE BACKFLOW PREVENTER, WATTS OR EQUAL
ZONE 3	—			ZONE NUMBER
SIZE 1.5"	—			VALVE SIZE
GPM 32	—			ZONE G.P.M. / G.P.H. (GALLONS PER MINUTE/HOUR)

RAINBIRD CONTROLLER MODEL ESP-4MC, 4 STATIONS, WALL MOUNT. LOCATED BY CONTRACTOR- COORDINATE ELECTRICAL HOOKUP.

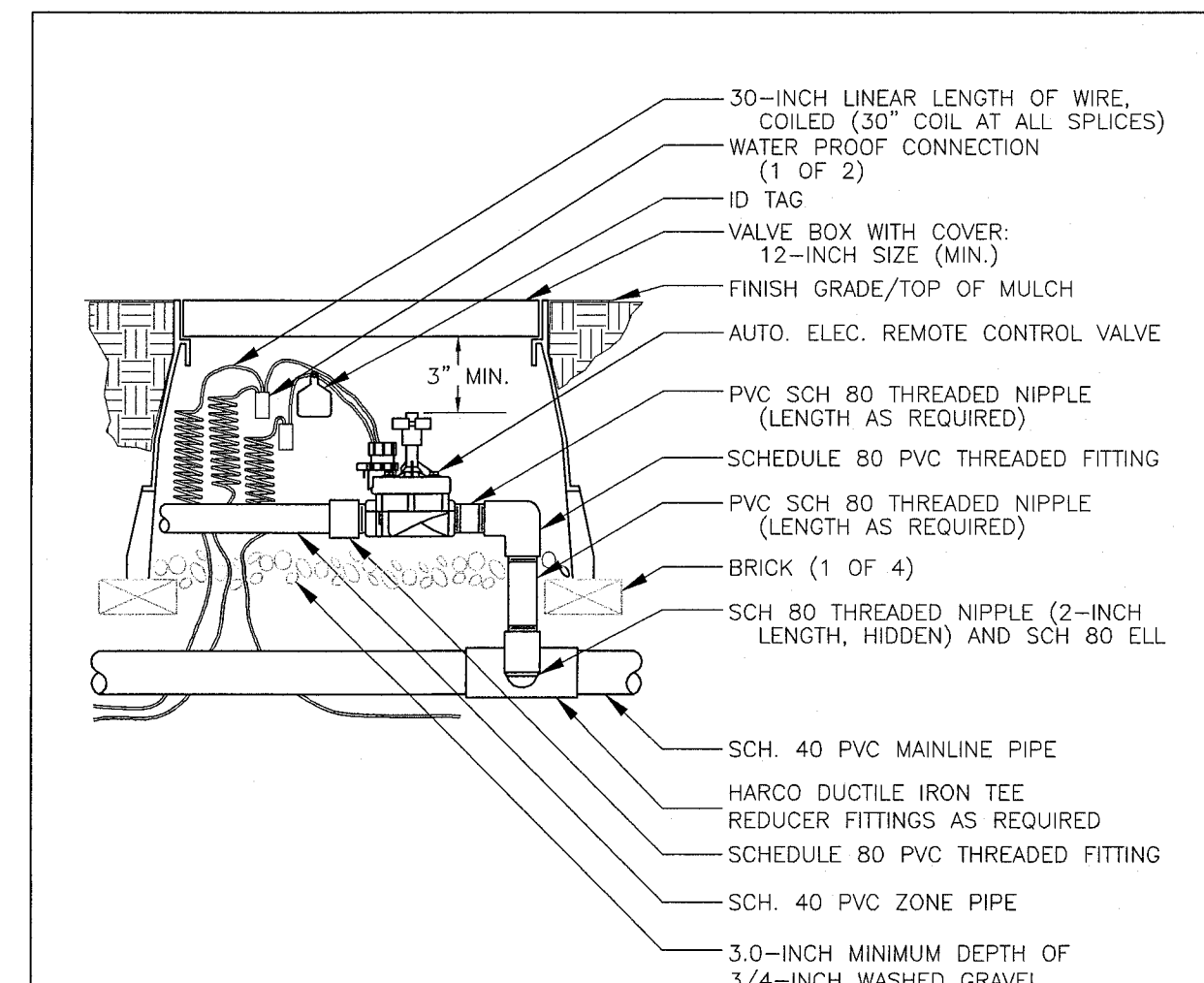


A 6" POP-UP SPRAY SPRINKLER

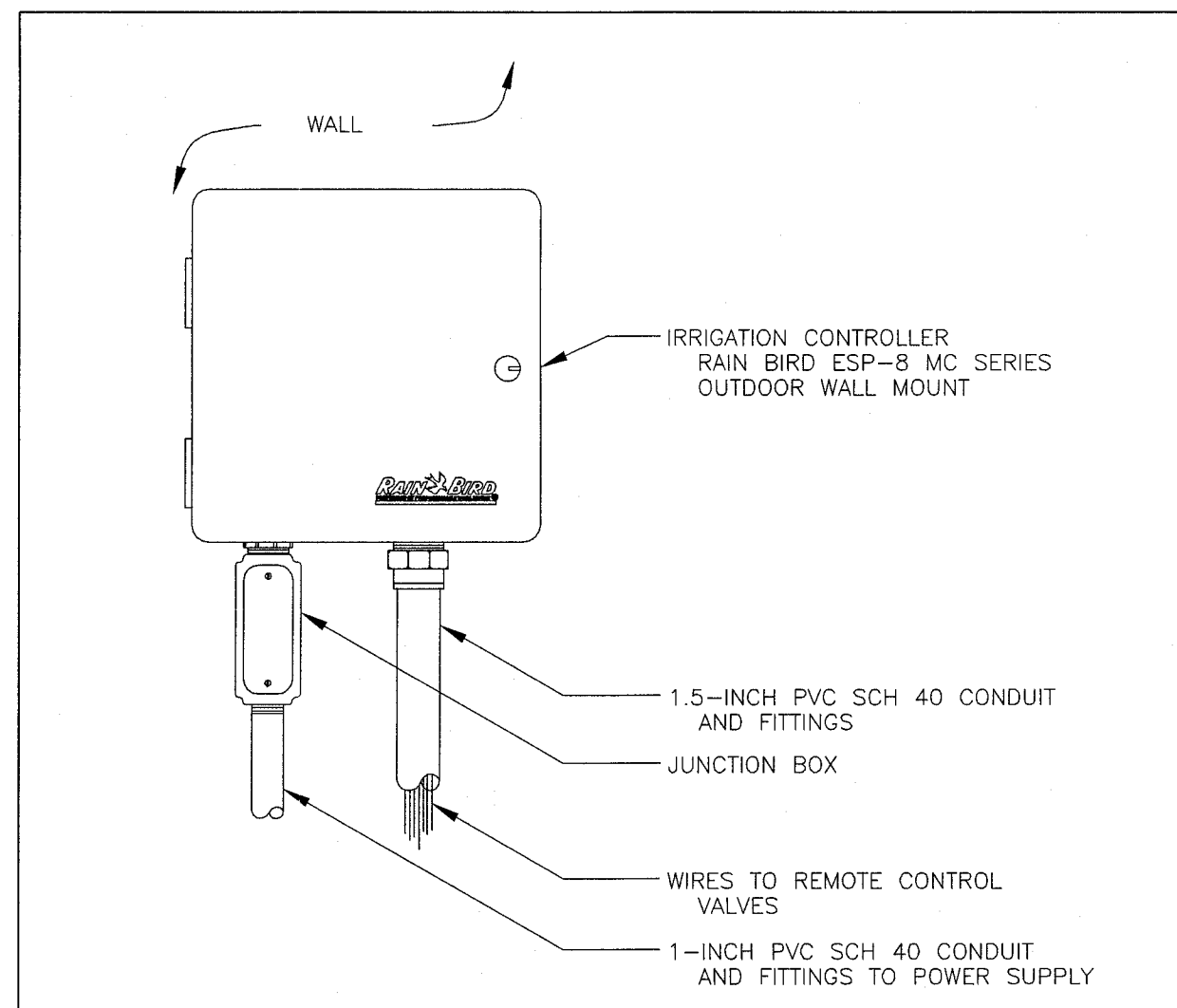


NOTES:
 1. IRRIGATION SLEEVES UNDER WALKS AND PAVERS TO BE SCHEDULE 40 PVC PIPE.
 2. IRRIGATION SLEEVES UNDER VEHICLE TRAFFIC AREAS TO BE SCHEDULE 80 PVC PIPE.
 3. JOINTS UNDER 3" TO BE SOLVENT WELDED AND WATERTIGHT.
 4. WHERE THERE IS MORE THAN ONE SLEEVE, EXTEND THE SMALLER SLEEVE TO 24-INCHES MINIMUM ABOVE FINISH GRADE.
 5. MECHANICALLY TAMP TO 100% PROCTOR.

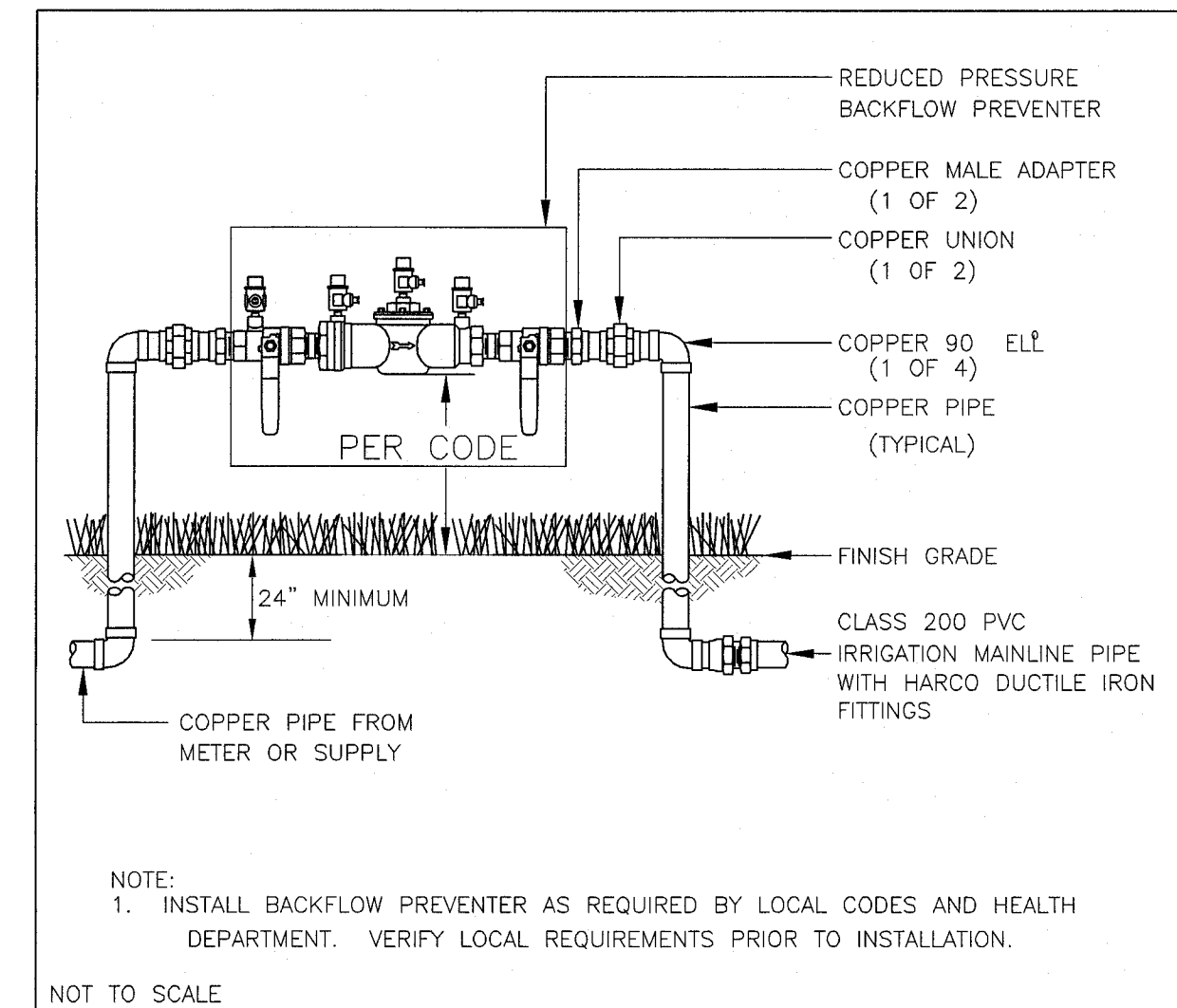
B PIPE SLEEVES



C 1 1/2" ZONE CONTROL VALVE

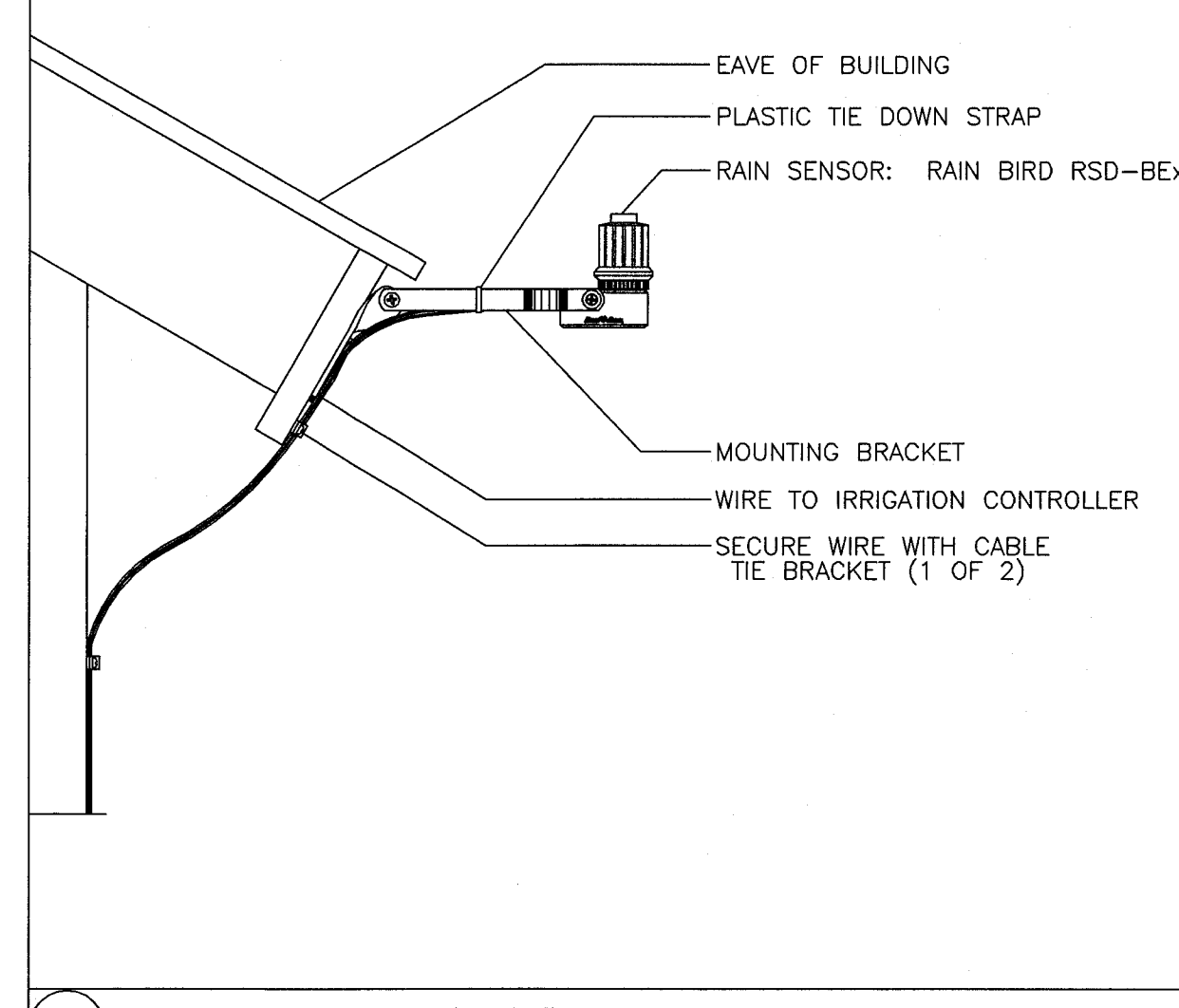


D WALL MOUNT CONTROLLER

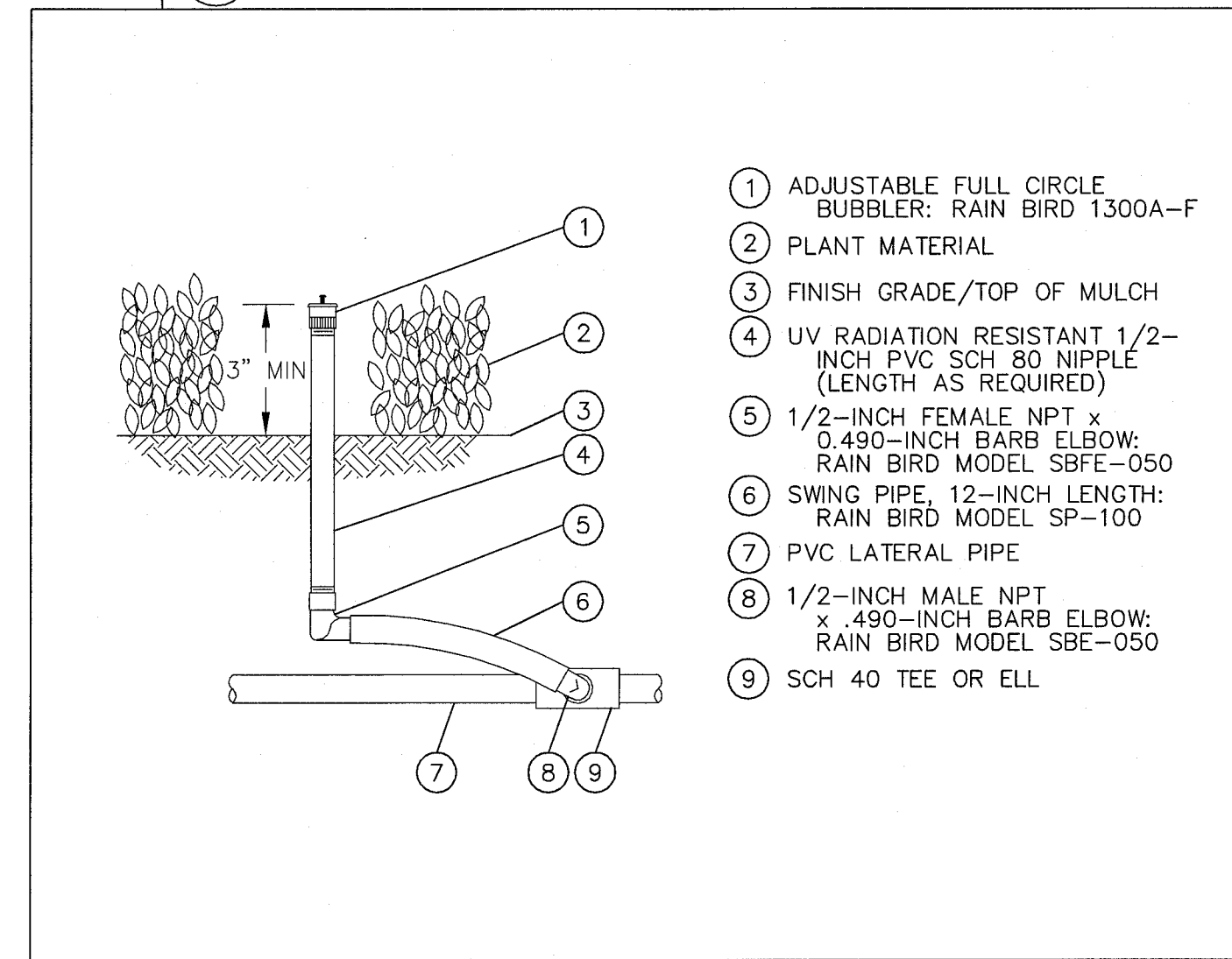


NOTE:
 1. INSTALL BACKFLOW PREVENTER AS REQUIRED BY LOCAL CODES AND HEALTH DEPARTMENT. VERIFY LOCAL REQUIREMENTS PRIOR TO INSTALLATION.

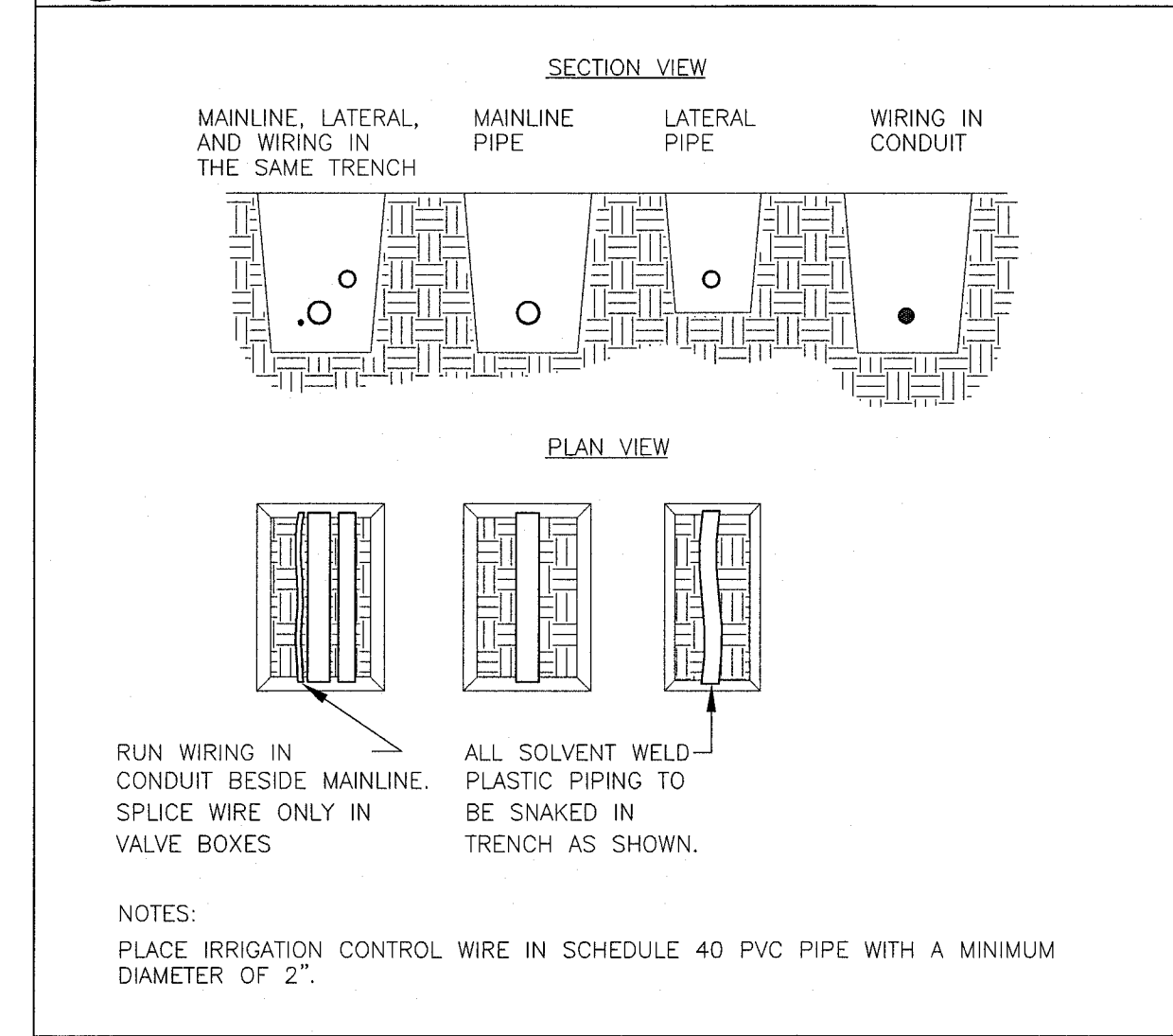
E BACKFLOW PREVENTER



F RAIN SENSOR

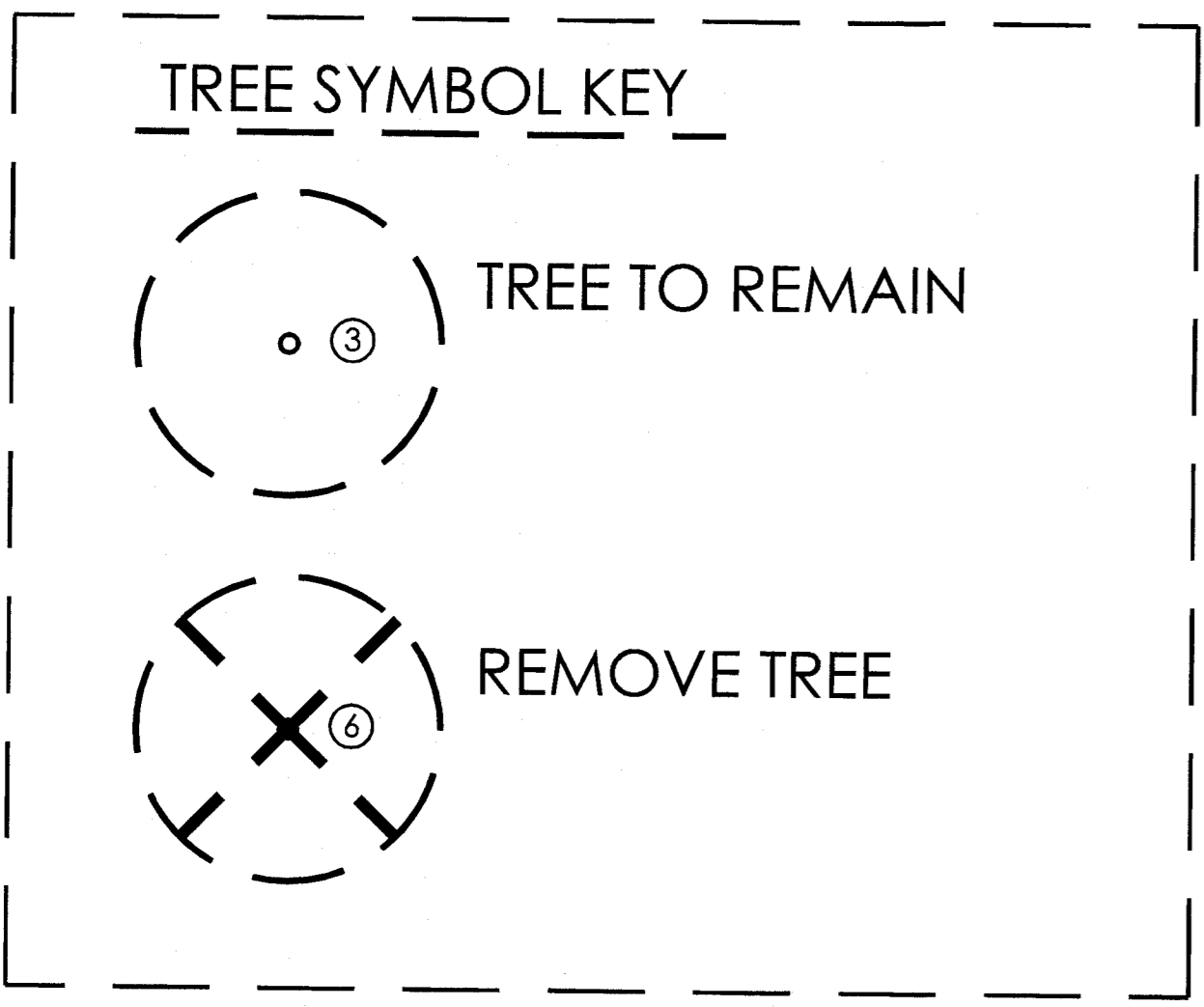
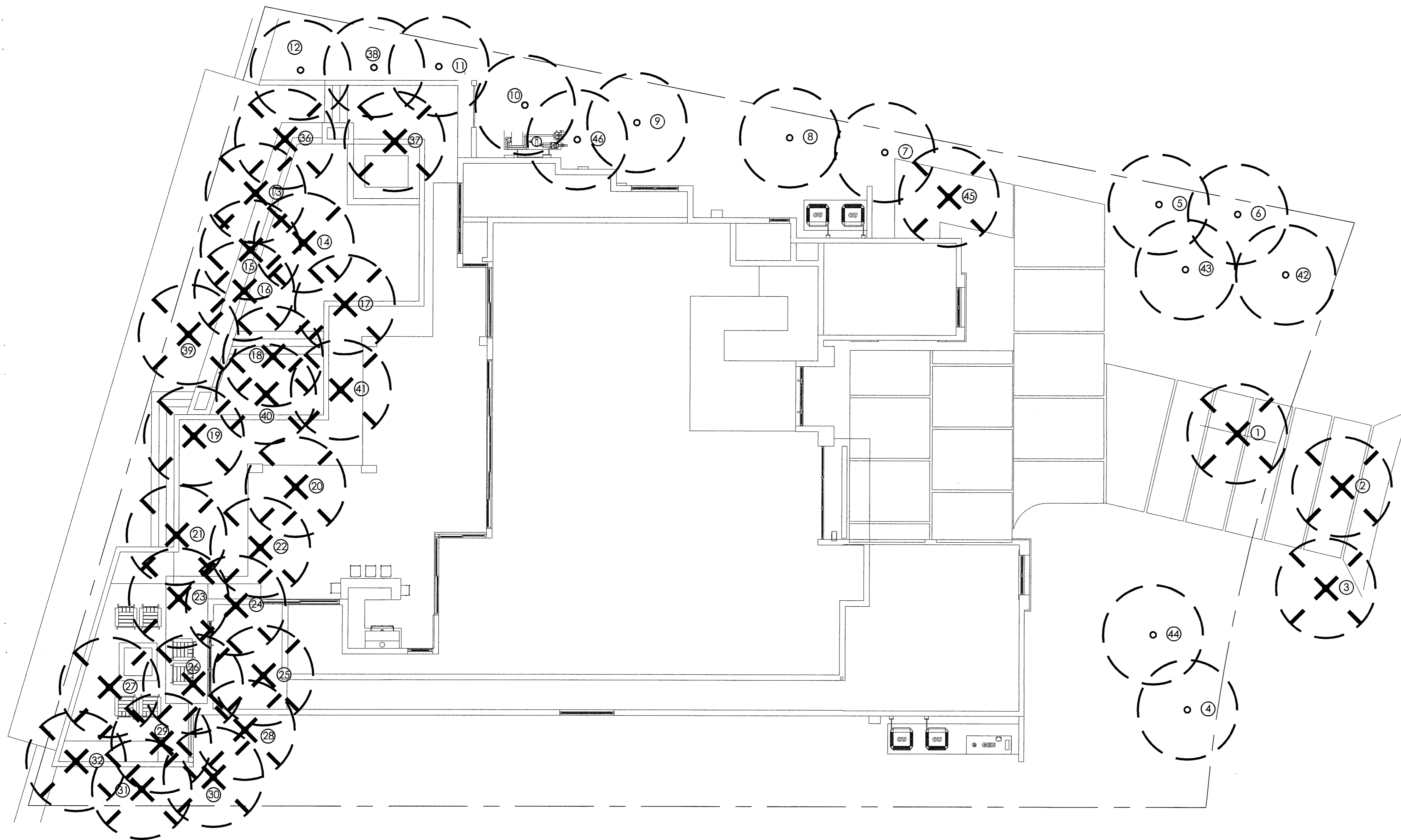


G BUBBLER DETAIL



H PIPE & WIRE TRENCHING

IRRIGATION DETAILS



32 Seneca Drive
SEA RANCH LAKES, FLORIDA

** DENOTES NATIVE

TREE DISPOSITION TABULATION CHART

NO.	TREE / PALM SPECIES	SPECIFICATION	DISPOSITION	CONDITION
1	Bambusa vulgaris <i>Bamboo</i>	20' os ht	Remove	0%
2	Cocos nucifera <i>Coconut Palm</i>	35' ct ht	Remove	35%
3	Cocos nucifera <i>Coconut Palm</i>	35' ct ht	Remove	35%
4	Ficus rubiginosa <i>Rusty Fig</i>	25' ht x 20' spr., 46" DBH	Remain	25%
5	Mangifera indica <i>Mango</i>	see Arborist Report	Remain	0%
6	Adonidia merrillii <i>Xmas Palm</i>	10' ct ht	Remain	25%
7	Adonidia merrillii <i>Xmas Palm</i>	10' ct ht	Remain	25%
8	Adonidia merrillii <i>Xmas Palm</i>	10' ct ht	Remain	25%
9	Litchi chinensis <i>Lychee Tree</i>	10' ht x 5' spr., 4" DBH	Remain	10%
10	Litchi chinensis <i>Lychee Tree</i>	10' ht x 5' spr., 4" DBH	Remain	10%
11	Persea americana <i>Avacado Tree</i>	10' ht x 5' spr., 4" DBH	Remain	10%
12	Coccolobo uvifera ** <i>Sea Grape</i>	10' ht x 5' spr., 3" DBH	Remain	10%
13	Cocos nucifera <i>Coconut Palm</i>	25-30' ct ht	Remove	50%
14	Cocos nucifera <i>Coconut Palm</i>	25-30' ct ht	Remove	50%
15	Cocos nucifera <i>Coconut Palm</i>	25-30' ct ht	Remove	50%
16	Cocos nucifera <i>Coconut Palm</i>	25-30' ct ht	Remove	50%
17	Cocos nucifera <i>Coconut Palm</i>	25-30' ct ht	Remove	50%
18	Cocos nucifera <i>Coconut Palm</i>	25-30' ct ht	Remove	50%
19	Cocos nucifera <i>Coconut Palm</i>	25-30' ct ht	Remove	50%
20	Cocos nucifera <i>Coconut Palm</i>	25-30' ct ht	Remove	50%
21	Cocos nucifera <i>Coconut Palm</i>	25-30' ct ht	Remove	50%
22	Cocos nucifera <i>Coconut Palm</i>	25-30' ct ht	Remove	50%
23	Cocos nucifera <i>Coconut Palm</i>	25-30' ct ht	Remove	50%
24	Cocos nucifera <i>Coconut Palm</i>	25-30' ct ht	Remove	50%
25	Cocos nucifera <i>Coconut Palm</i>	25-30' ct ht	Remove	50%
26	Cocos nucifera <i>Coconut Palm</i>	25-30' ct ht	Remove	50%
27	Cocos nucifera <i>Coconut Palm</i>	25-30' ct ht	Remove	50%
28	Cocos nucifera <i>Coconut Palm</i>	25-30' ct ht	Remove	50%
29	Cocos nucifera <i>Coconut Palm</i>	25-30' ct ht	Remove	50%
30	Cocos nucifera <i>Coconut Palm</i>	25-30' ct ht	Remove	50%
31	Cocos nucifera <i>Coconut Palm</i>	25-30' ct ht	Remove	50%
32	Cocos nucifera <i>Coconut Palm</i>	25-30' ct ht	Remove	50%
33	Cocos nucifera <i>Coconut Palm</i>	25-30' ct ht	Remove	50%
34	Cocos nucifera <i>Coconut Palm</i>	25-30' ct ht	Remove	50%
35	Cocos nucifera <i>Coconut Palm</i>	25-30' ct ht	Remove	50%
36	Adonidia merrillii <i>Xmas Palm</i>	6' ct ht	Remain	10%
37	Ptychosperma elegans <i>Alexander Palm</i>	10' ct ht - Tpl trunk	Remain	10%
38	Ptychosperma elegans <i>Alexander Palm</i>	10' ct ht - Tpl trunk	Remain	10%
39	Adonidia merrillii <i>Xmas Palm</i>	6' ct ht	Remove	10%
40	Adonidia merrillii <i>Xmas Palm</i>	6' ct ht	Remain	10%
41	Adonidia merrillii <i>Xmas Palm</i>	6' ct ht	Remove	10%
42	Adonidia merrillii <i>Xmas Palm</i>	6' ct ht	Remain	20%
43	Adonidia merrillii <i>Xmas Palm</i>	6' ct ht	Remain	20%
44	Ptychosperma elegans <i>Alexander Palm</i>	14' ct ht	Remain	10%
45	Mangifera indica <i>Mango</i>	10' ht x 2' spr., 2" DBH	Remain	10%
46	Litchi chinensis <i>Lychee Tree</i>	12' ht x 4' spr., 2" DBH	Remain	10%

NOT USED



32 Seneca Drive

SEA RANCH LAKES, FLORIDA

** DENOTES NATIVE

TREE DISPOSITION TABULATION CHART				
NO.	TREE / PALM SPECIES	SPECIFICATION	DISPOSITION	CONDITION
1	Bambusa vulgaris Bamboo	20' os ht	Remove	0%
2	Cocos nucifera Coconut Palm	35' ct ht	Remove	35%
3	Cocos nucifera Coconut Palm	35' ct ht	Remove	35%
4	Ficus rubiginosa Rusty Fig	25' ht x 20' spr., 46" DBH	Remove	25%
5	Mangifera indica Mango	see Arborist Report	Remove	0%
6	Adonidia merrillii Xmas Palm	10' ct ht	Remain	25%
7	Adonidia merrillii Xmas Palm	10' ct ht	Remain	25%
8	Adonidia merrillii Xmas Palm	10' ct ht	Remain	25%
9	Litchi chenensis Lychee Tree	10' ht x 6' spr., 4" DBH	Remain	10%
10	Litchi chenensis Lychee Tree	10' ht x 5' spr., 4" DBH	Remain	10%
11	Persea americana Avacado Tree	10' ht x 5' spr., 4" DBH	Remain	10%
12	Coccoloba uvifera ** Sea Grape	10' ht x 5' spr., 3" DBH	Remain	10%
13	Cocos nucifera Coconut Palm	25-30' et ht	Remove	50%
14	Cocos nucifera Coconut Palm	25-30' et ht	Remove	50%
15	Cocos nucifera Coconut Palm	25-30' et ht	Remove	50%
16	Cocos nucifera Coconut Palm	25-30' et ht	Remove	50%
17	Cocos nucifera Coconut Palm	25-30' et ht	Remove	50%
18	Cocos nucifera Coconut Palm	25-30' et ht	Remove	50%
19	Cocos nucifera Coconut Palm	25-30' et ht	Remove	50%
20	Cocos nucifera Coconut Palm	25-30' et ht	Remove	50%
21	Cocos nucifera Coconut Palm	25-30' et ht	Remove	50%
22	Cocos nucifera Coconut Palm	25-30' et ht	Remove	50%
23	Cocos nucifera Coconut Palm	25-30' et ht	Remove	50%
24	Cocos nucifera Coconut Palm	25-30' et ht	Remove	50%
25	Cocos nucifera Coconut Palm	25-30' et ht	Remove	50%
26	Cocos nucifera Coconut Palm	25-30' et ht	Remove	50%
27	Cocos nucifera Coconut Palm	25-30' et ht	Remove	50%
28	Cocos nucifera Coconut Palm	25-30' et ht	Remove	50%
29	Cocos nucifera Coconut Palm	25-30' et ht	Remove	50%
30	Cocos nucifera Coconut Palm	25-30' et ht	Remove	50%
31	Cocos nucifera Coconut Palm	25-30' et ht	Remove	50%
32	Cocos nucifera Coconut Palm	25-30' et ht	Remove	50%
33	Cocos nucifera Coconut Palm	25-30' et ht	Remove	50%
34	Cocos nucifera Coconut Palm	25-30' et ht	Remove	50%
35	Cocos nucifera Coconut Palm	25-30' et ht	Remove	50%
36	Adonidia merrillii Xmas Palm	6' ct ht	Remain	10%
37	Ptychosperma elegans Alexander Palm	10' ct ht - Tpl trunk	Remain	10%
38	Ptychosperma elegans Alexander Palm	10' ct ht - Tpl trunk	Remain	10%
39	Adonidia merrillii Xmas Palm	6' ct ht	Remove	10%
40	Adonidia merrillii Xmas Palm	6' ct ht	Remain	10%
41	Adonidia merrillii Xmas Palm	6' ct ht	Remove	10%
42	Adonidia merrillii Xmas Palm	6' ct ht	Remove	20%
43	Adonidia merrillii Xmas Palm	6' ct ht	Remove	20%
44	Ptychosperma elegans Alexander Palm	14' ct ht	Remove	10%
45	Mangifera indica Mango	10' ht x 2' spr., 2" DBH	Remain	10%
46	Litchi chenensis Lychee Tree	12' ht x 4' spr., 2" DBH	Remain	10%

