

# MID CENTURY MODERN COASTAL RESIDENCE SITE IMPROVEMENTS PACKAGE

6 WINNEBAGO RD,  
SEA RANCH LAKES, FL 33308

## Scope of work:

Residential lot designed by historic architect that has severe grading and drainage issues throughout the property. The challenge is to create an aesthetically please in design appropriate for the one story house that ties the house back to the land. A new Modern slab driveway with lawn joints will replace the existing driveway.

## TABLE OF CONTENTS

DRIVEWAY RENDERING  
DISPOSITION PLAN  
LANDSCAPE PLAN  
PLANTING IMAGES  
LIGHTING PLAN

**VFD**  
VINCENT FILIGENZI DESIGN  
LANDSCAPE ARCHITECTURE | PLANNING | IMPLEMENTATION



**VFD**

VINCENT FILIGENZI DESIGN

LANDSCAPE ARCHITECT  
FL STATE LICENSE

88 S. Orange Ave. #400  
Orlando, FL 32801  
P: 407.246.8800  
www.vincentfd.com

PROFESSIONAL SEAL:

DATE:

Digitally  
Signed by  
Vincent A.  
Filigenzi  
Date:  
2021.02.08  
12:46:22  
-0500

VINCENT A. FILIGENZI  
LA 00007191

6 WINNEBAGO RD  
SEA RANCH LAKES, FLORIDA 33308

SHEET NAME

DATE

SCALE: SEE PLANS

DRAWN BY:

CHECKED BY: VP

DATE:

DISCIPLINE / SHEET TITLE:

COVER

SHEET NUMBER:

LC-1.0



PROPOSED DRIVEWAY SIDE VIEW



EXISTING DRIVEWAY

**VPD**  
 VANCE DESIGN PARTNERS  
 11111 W. BAYVIEW BLVD., SUITE 100  
 MIAMI, FL 33147  
 (305) 551-1111  
 www.vpd.com

VPD  
 VANCE DESIGN PARTNERS  
 11111 W. BAYVIEW BLVD., SUITE 100  
 MIAMI, FL 33147  
 (305) 551-1111  
 www.vpd.com

PROFESSIONAL SEAL

6 WINNEBAGO RD  
 SEA RANCH LAKES, FLORIDA 33308

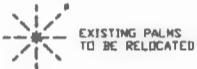
SCALE AND PLAN  
 DRAWING BY  
 CHECKED BY  
 DATE  
 DEDICATED / SHEET TITLE

LR-1.0

DISPOSITION LEGEND



EXISTING PALMS TO REMAIN



EXISTING PALMS TO BE RELOCATED

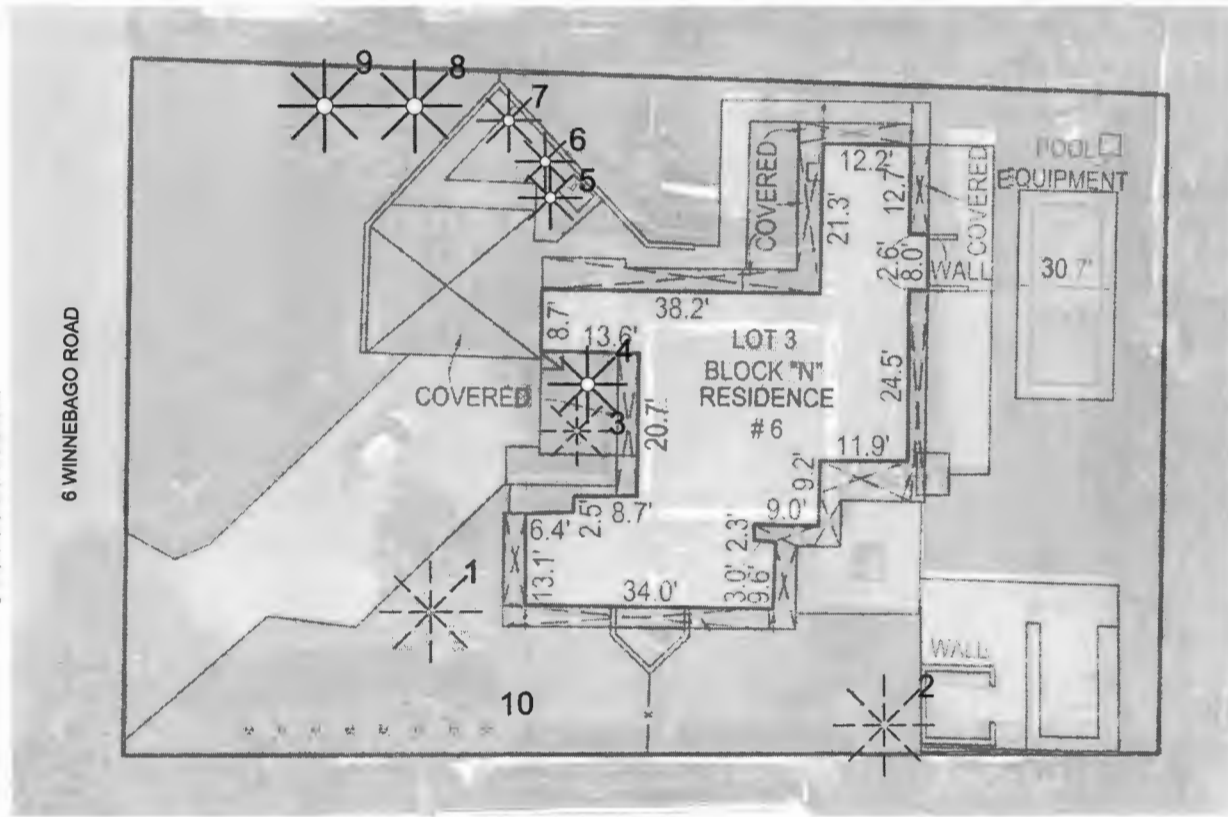


EXISTING TREES TO BE REMOVED

EXISTING TREES/PALMS								
NO.	COMMON NAME	BOTANICAL NAME	DBH	HT	SP	CONDITION	#	STATUS
1	Bismarck Palm	<i>Bismarckia nobilis</i>		25'		GOOD	1	RELOCATE
2	Cabbage Palm	<i>Sabal palmetto</i>		15'		GOOD	1	RELOCATE
3	Pygmy Date Palm	<i>Phoenix roebelenii</i>		12'		GOOD	1	RELOCATE
4	Coconut Palm	<i>Cocos nucifera</i>		30'		GOOD	1	REMAIN
5	Cabbage Palm	<i>Sabal palmetto</i>		25'		GOOD	1	REMAIN
6	Ponytail Palm	<i>Beaucarnea recurvata</i>		15'		GOOD	1	REMAIN
7	Cabbage Palm	<i>Sabal palmetto</i>		25'		GOOD	1	REMAIN
8	Cabbage Palm	<i>Sabal palmetto</i>		25'		GOOD <td 1	REMAIN	
9	Cabbage Palm	<i>Sabal palmetto</i>		25'		GOOD	1	REMAIN
10	Weeping Fig	<i>Ficus benjamina</i>		14'		FAIR	9	REMOVE

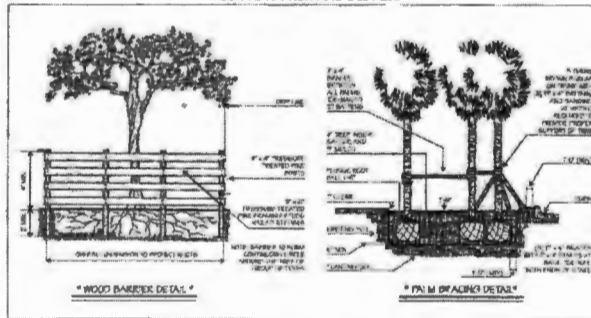
NOTE

EXISTING TREES SYMBOLS ARE GRAPHIC AND LOCATION MAY VARY SLIGHTLY

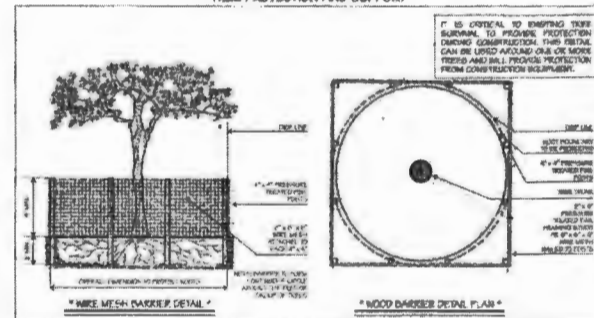


TREE DISPOSITION PLAN  
Scale: 1/8" = 1'-0"

TREE PROTECTION AND SUPPORT



TREE PROTECTION AND SUPPORT



**VFD**  
VINCENT FIGUEROA DESIGN

LANDSCAPE ARCHITECT  
A R.A.I.C. MEMBER  
400 Brown Oak Road  
Suite 10, 3710  
P.O. Box 100  
Tampa, Florida 33610  
www.vfd.com

PROFESSIONAL SEAL

Digitally  
Signed by  
Vincent A.  
Figueroa  
Date: 2021.02.08  
12:45:09  
45707

VINCENT A. FIGUEROA  
LA 0000104

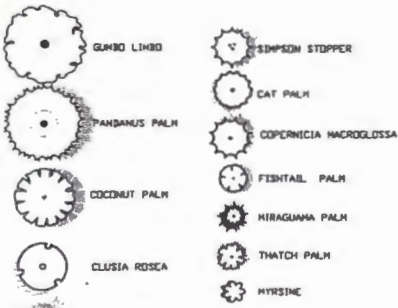
6 WINNERAGO RD  
SEA RANCH LAKES, FLORIDA 33308

SHEET TITLE

SCALE: SEE PLANS  
DRAWN BY: [blank]  
CHECKED BY: VP  
DATE: [blank]  
DISCIPLINE / SHEET TITLE:  
EXISTING TREE  
DISPOSITION  
PLAN

SHEET NUMBER  
LD-1.0

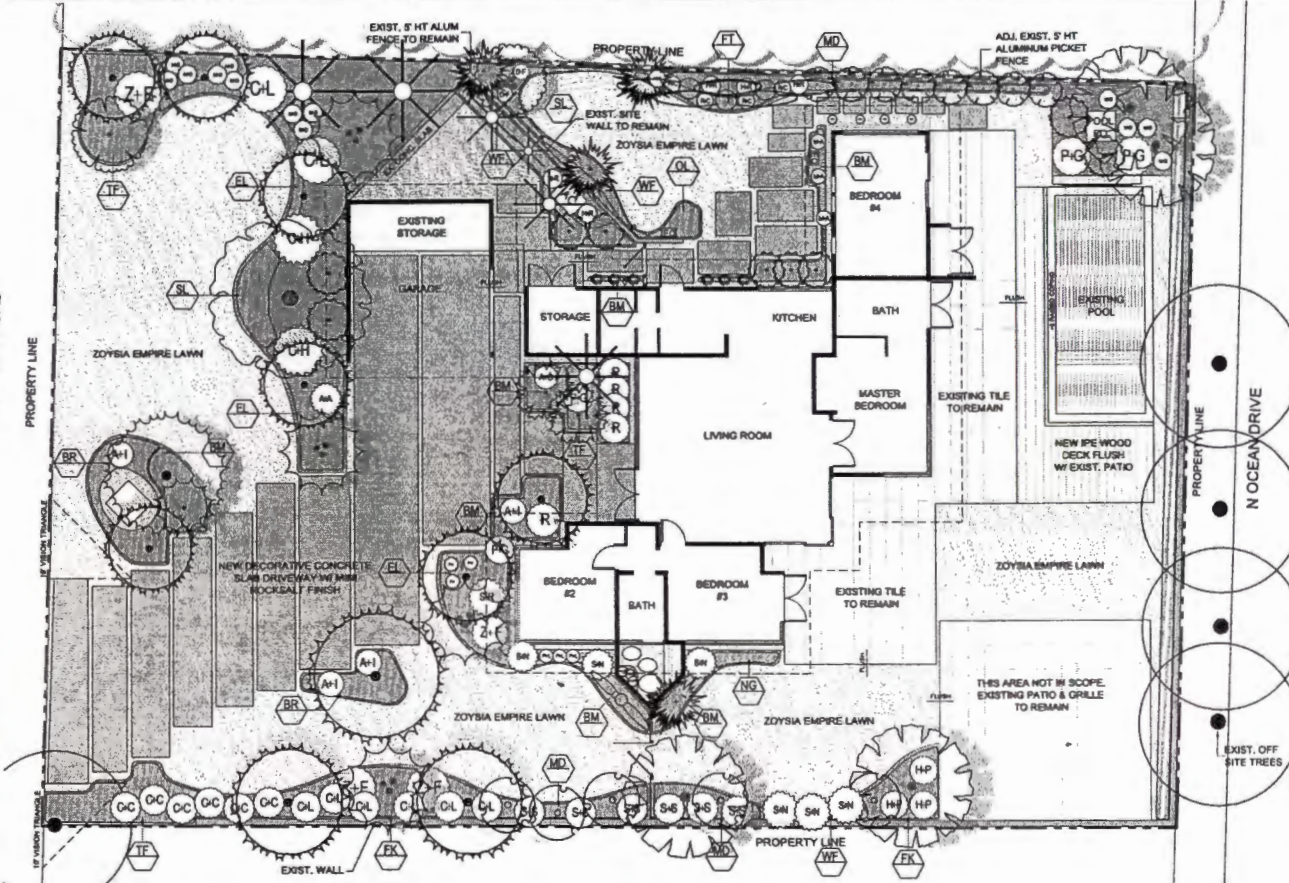
PLANT SYMBOLS



PROPOSED PLANT LIST

SYM	BOTANICAL NAME	COMMON NAME	SPEC	NATIVE/ DROUGHT	QTY
<b>EXISTING TREES + PALMS</b>					
	Sabal palm	Cabbage Palm	5' HT, 2 trunks, 4 remain	*	8
	Phoenix roebelinii	Pygmy Date Palm	12' HT, Retain	*	1
	Coccothrinax acutiformis	Coconut Palm	30' HT, Remain	*	1
	Brauzeria racemosa	Parrot Palm	18' HT, Remain	*	1
<b>CATEGORY 1 TREE</b>					
	Bumelia americana	Gumbo Limbo	18' HT @ 8" DBH	*	1
<b>TREES + PALMS</b>					
	Coccothrinax acutiformis	Coconut Palm	5-6S: 7' CT, 5-8 12-18' CT	*	4
	Pandanus sp.	Pandanus Palm	12' W	*	1
	Clusia rosea	Fishtail Palm	PG 12" OA, 3"-4" DBH	*	1
	Sabal palm	Sabal Palm	18' HT	*	7
	Warwickia robusta	Warwickia Tree	PG COLUMNS 14"-18" OA	*	4
	Myrsine guianensis	Slimwood Shrimp	TG 12" HT, 4" W/ MOUTH	*	4
	Chamaedorea cataractarum	Cat Palm	15-20, 4"-5" HT	*	8
	Copernicia macroglossa	Parrot Palm	3'-4" OA	*	1
	Thrinax parviflora	Warch Palm	18' OA	*	2
	Caryota	Fraxinus Palm	18' HT OA	*	8
	Myrsine guianensis	Myrsine	25G	*	8
	Coccothrinax acutiformis	Coconut Palm	12' HT OA TRIPLE	*	8
<b>SHRUBS + ACENTS</b>					
	SM	Sterea nicotiana	White Bird of Paradise	25G, 8' HT	8
	CL	Clusia guianensis	Clusia	25G	8
	HR	Hraiguama	Hraiguama	15G	6
	ZF	Zamia floridana	Coontail Palm	7G	4
	PL	Psychotria ligustrifolia	Bahama Coffee	7G	3
	AI	Alseodaphne angustata	torquifolium Bromeliad	30" x30", 15G	4
	HF	Hymenocallis	Flower	15G	2
	DF	Dwarf Firebush	Dwarf Firebush	15G	2
	SR	Scaevola rogersii	Solar Saw Palmetto	25G @ 3" HT	1
	R	Rapanea spectabilis	Ledy Palm	15G	4
	PC	Philadelphus virginianus	Great Philadelphia	25G	4
	PJ	Podocarpus floridana	Podocarpus	25G	3
	CH	Chamaedorea humilis	Shrub Cymodocea Palm	25G @ 4" HT	1
	MD	Medusa	Medusa	7G	3
	CC	Clusia rosea	Fishtail Palm	3G	4
	AA	Agave attenuata	Sagebrush Agave	15G	1
	MA	Massandra	Isabelle Bangs	15G	2
	MS	Myrsine guianensis	Slimwood Shrimp	25G @ 15G	8
	CC	Cyperus cymophyllus	Jamaican Cedar	15G @ 4" OC	8
	AO	Alseodaphne odorata	Shrub odorata bromeliad	25" HT	1
<b>GRASS/COVERS</b>					
	EL	Elymus hirtellus	Golden Crispgrass	1 GAL @ 12" OC	214
	TF	Trisetum floridanum	Common Grass	3 GAL @ 24" OC	118
	SI	Syntherisma	Mexican Bush Sage	1 GAL @ 24" OC	29
	BR	Berberis repens	Pure Coral Creeper	1 GAL @ 12" OC	155
	BM	Phlox paniculata	Butte Morn	3 GAL @ 24" OC	150
	FK	Flemingia strobilifera	Palmate Fern	3 GAL @ 24" OC	83
	MD	Medusa	Isabelle Bangs	3 GAL @ 24" OC	88
	WF	Wrightia	Wrightia	1 GAL @ 24" OC	47
	HT	Hymenocallis	Flower	3 GAL @ 24" OC	6
	FG	Flemingia strobilifera	Flemingia Fern	3 GAL @ 18" OC	18
	DL	Delonix regia	Madagascar Bush	3 GAL @ 24" OC	8
	Top Soil	80/20, 8" @ 4" Deep	Empress Agave	119.88 CY	
	Empress Agave	Empress Agave	Empress Agave	2014.88	

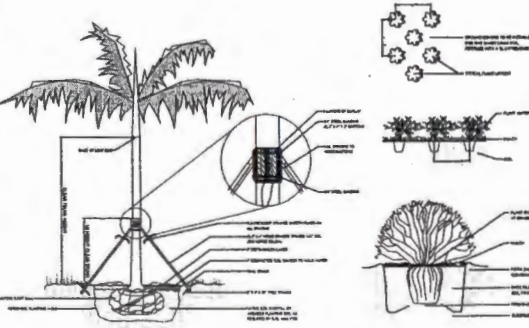
6 WINNEBAGO ROAD



GENERAL PLANTING NOTES:

- EXISTING TREES DESIGNATED TO REMAIN SHALL BE PROTECTED DURING ALL CONSTRUCTION PHASES. ANY TREES OR SHRUBS SCORED OR OTHERWISE DESIGNATED TO REMAIN WILL BE REPLACED AT THE CONTRACTOR'S EXPENSE, WITH SIMILAR SPECIES, SIZE AND QUALITY.
- LANDSCAPE CONTRACTOR SHALL CONTACT THE CITY AND/OR UTILITY COMPANIES TO LOCATE ALL UNDERGROUND UTILITIES OR STRUCTURES PRIOR TO ORDERING. LANDSCAPE CONTRACTOR SHALL REPAIR ALL DAMAGE TO UNDERGROUND UTILITIES, MINOR CONSTRUCTION CAUSED BY UTILITY DAMAGE, AT NO COST TO THE OWNER.
- ALL TREES TO BE PLANTED SHALL BE PLANTED IN THE FIELD BY CONTRACTORS TO MEET ALL UTILITY AND ALL OTHER CONSTRUCTION.
- ALL PLANT MATERIALS SHALL BE GUARANTEED FOR A PERIOD OF 12 MONTHS AFTER DATE OF SUBSTITUTION COMPLETION.
- LANDSCAPE CONTRACTOR SHALL VERIFY ALL ESTIMATED QUANTITIES OF MATERIAL SHOWN ON THE DRAWINGS PRIOR TO SUBMITTING HIS BID. PLANTING PLAN TO THIS PRECEDENCE OVER PLANT LIST.
- ALL AREA DISTURBED DURING CONSTRUCTION SHALL BE SOIL UNLESS OTHERWISE NOTED.
- EXISTING PLANT MATERIAL NOT SHOWN ON THE PLAN AND IN CONFLICT WITH NEW PLANTING SHALL BE EVALUATED AT THE TIME OF NEW PLANTING INSTALLATION BY THE LANDSCAPE ARCHITECT.
- ALL BUILDING CONSTRUCTION MATERIAL AND FOREIGN MATERIAL SHALL BE REMOVED FROM PLANTING AREAS AND REPLACED WITH SOIL OR FILL SOIL, OR AS PER SPECIFICATION.
- ALL PLANT MATERIAL SYMBOLS SHOWN ON LANDSCAPE PLAN SHALL BE CONSIDERED UNDIMENSIONAL AND SHALL BE ALTERED BY THE FIELD BY CONTRACTOR TO MEET ALL UTILITY AND ALL OTHER CONSTRUCTION.
- ALL BIDS SHOWN FOR PLANT MATERIAL ON THE PLAN ARE TO BE CONSIDERED MINIMAL. ALL PLANT MATERIAL MUST MEET OR EXCEED THESE MINIMUM REQUIREMENTS FOR BOTH HEIGHT AND SPREAD. ANY OTHER REQUIREMENTS FOR SPECIFIC PLANTS OR SPECIES AS NOTED ON THE PLAN SHALL ALSO BE REQUIRED FOR ACCEPTANCE. ALL TREES TO BE SINGLE TRUNKED, UNLESS OTHERWISE NOTED ON THE PLAN.
- ALL TREES TO BE RELOCATED SHALL BE ROOT PRUNED 6 DAYS PRIOR TO THEIR RELOCATION.
- TREES TO BE TRANSPLANTED ARE TO BE FLOODED FOR FIVE DAYS PRIOR TO RELOCATION.
- SITE PREPARATION SHALL INCLUDE THE EVACUATION AND REMOVAL OF ANY WEEDS, GRASS, CLEARUP OF ANY DEAD MATERIAL, AND PROPER GRADING AS PER THE SPEC.

PLANT DETAILS:



OVERALL LANDSCAPE PLAN

**VFD**  
VINCENT FALCETTI DESIGN  
LANDSCAPE ARCHITECT  
R. RALPH BERRY  
66 Popple Hill Rd  
Mesa, FL 32185  
P: 386.240.9880  
www.vfdlandscape.com

PROFESSIONAL SEAL:  
Vincent Falcetti  
LA 19987191

Digitally signed by Vincent A. Falcetti  
Date: 2021.02.28 12:45:53 -0500

6 WINNEBAGO RD  
SEA RANCH LAKES, FLORIDA 33308

SCALE: SEE PLANS  
DRAWN BY:  
CHECKED BY: VFD  
DATE:  
DISCIPLINE / SHEET TITLE:  
**PROPOSED LANDSCAPE PLAN**  
SHEET NUMBER:  
**LP-1.0**



COCONUT PALM



PANDANUS PALM



AFRICAN OIL PALM



PITCH-APPLE



SABAL PALM



TRAVELER TREE



SIMPSON STOPPER



CAT PALM



THATCH PALM



FISHTAIL PALM



MYRSINE



MIRAGUAMA PALM



WHITE BIRD OF PARADISE



CLUSIA



HELICONIA

**VFD**

VINCENT FIGUEROA DESIGN

LANDSCAPE ARCHITECT  
A FLA LIC 38876

88 Dunwoody Blvd #408  
Boca Raton, FL 33433  
P: 561.993.8888  
www.vfdlandscape.com

PROFESSIONAL SEAL:

Digitally  
Signed by  
Vincent A.  
Figueroa  
Date:  
2023.02.08  
12:46:11  
VINCENT A. FIGUEROA  
LA 00007014

6 WINNEBAGO RD  
SEA RANCH LAKES, FLORIDA 33308

SHEET TITLE  
REV. DATE

SCALE: SEE PLANS  
DRAWN BY:  
CHECKED BY: VF  
DATE:

ENCLOSURE / SHEET TITLE  
**PLANTING  
IMAGES**

SHEET NUMBER:  
**LP-2.0**



COONTIE PALM



BAHAMA COFFEE



IMPERIAL BROMELIAD



FIREBUSH



SILVER SAW PALMETTO



LADY PALM



GIANT PHILODEDRON



PORTEA JUNGLES



SILVER EURO FAN PALM



SWISS CHEESE PALM



BLACK CORAL



SPINELESS AGAVE



EDIBLE BANANA



JAMAICAN CAPER



SILVER ORODATA BROMELIAD

**VFD**

VINCENT FERRARO DESIGN

LANDSCAPE ARCHITECT  
FL REG. NO. 35070  
8880 BAYVIEW BLVD #400  
MIAMI, FL 33156  
P 784.248.8888  
www.vincentferraro.com

PROFESSIONAL SEAL:

Digitally signed  
by Vincent A.  
Ferraro  
Date: 2021.03.08  
12:46:04 -0500

VINCENT A. FERRARO  
LA 00000001

6 WINNEBAGO RD  
SEA RANCH LAKES, FLORIDA 33308

SCALE: SEE PLANS

DESIGNED BY:

CHECKED BY: VF

DATE:

PROJECT / SHEET TITLE:

PLANTING IMAGES

SHEET NUMBER:

LP-3.0